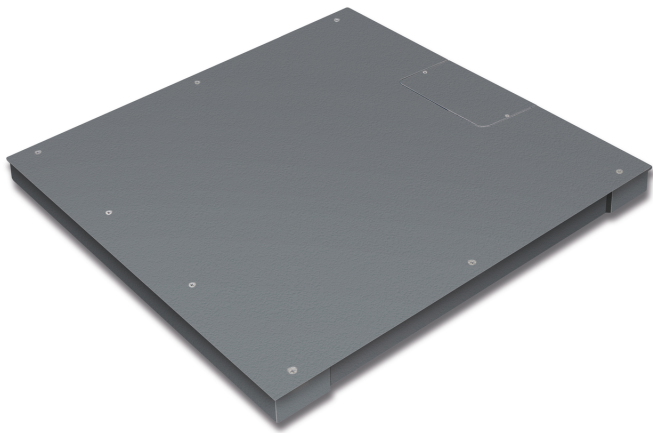


# KERN KFP 3000V20LNM

Weighing bridge made from steel, also with weighing plate screwed on from the top



## Environmental conditions

Ambient temperature [Max]	40 °C
---------------------------	-------

## Approval

Conformity assessment possible ex works	✓
Accuracy classe	III
Verification scale interval [e]	1 kg

## Services (optional)

Article number for conformity assessment	965-232
Article number for DAkkS calibration	963-132

## Packing & Shipping

Delivery time	2 d
Dimensions packaging (W×D×H)	1610×1570×360 mm
Net weight	171 kg
Shipping method	Freight
Net weight approx.	175 kg
Gross weight approx.	235 kg
Shipping weight	234 kg

## Pictograms

### STANDARD



### FACTORY



## Category

Brand	KERN
Product category	Component
Product group	Weighing bridge
Product family	KFP-V20-IP67

## Measuring System

Weighing capacity [Max]	3000 kg
Readability [d]	1 kg
Minimum weight [Min]	20 kg
Loadcell type	ZEMIC H8C 1.5 ton
Load cell connection	6-wire

## Construction

Dimensions weighing surface (W×D)	1500×1500 mm
Dimensions weighing surface	1500×1500 mm
Dimensions weighing platform (W×D×H)	1500×1500×85 mm
Material weighing plate	steel, powder-coated
Material platform	steel, powder-coated
Material load cell(s)	alloyed steel
Levelling feet adjustable	✓
Cable length	5 m
Allowed cable length display device [Max]	20 m
Platform Construction	Screwed load plate; smooth surface
Load cells - number	4

## Functions

IP protection - platform	IP65
IP protection - load cell	IP67