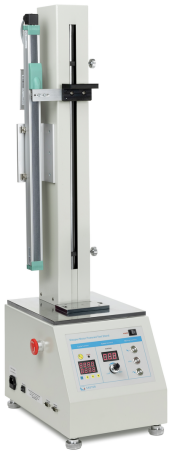


KERN TVO 1000N500S-LD

Practical set for force-displacement-measurements in laboratory and industry



Category

Brand	Sauter
Product category	Test bench
Product group	Test stand set
Product family	TVO-LD

Measuring System

Measurable length [Max]	52 cm
Length measuring device	Length measuring device with data interface

Display

Display type	LED segments
Display type	7 segment LED
Display digit height - smallest digit	9 mm

Construction

Dimension (W×D×H)	980×405×265 mm
Dimension housing (W×D×H)	980×405×265 mm
Dimensions completely mounted (W×D×H)	980×405×265 mm
Material display housing	Metal
Type of drive	Stepper motor
Mounting - force dissipation	5 × threaded hole M6
Mounting - force application	5 × threaded hole M6
Generated force [Max]	1 kN
Transversal movement speed [Min]	1 mm/min
Transversal movement speed [Max]	500 mm/min
Transversal movement speed variation	0,5%
Measurement alignment	vertical

Traverse distance [Max]	500 mm
-------------------------	--------

Functions

Speed display	✓
Repeat function	✓
Length measuring - zero setting	✓
Limit switch	✓

Power Supply

Supplied power supply	Power supply unit
Plug-in power supply type	Built-in power supply
Plug-in power supply / adapter for countries - optional	EURO UK CH
Input voltage power supply / power [Max]	230 V AC, 50 Hz
Input voltage device / power [Max]	230 V AC, 50 Hz

Environmental conditions

Ambient temperature [Min]	10 °C
Ambient temperature [Max]	40 °C
Storage temperature [Min]	-10 °C
Storage temperature [Max]	40 °C

Approval

CE mark	✓
---------	---

Packing & Shipping

Delivery time	2 d
Dimensions packaging (W×D×H)	470×370×1150 mm
Shipping method	Freight
Net weight approx.	36 kg
Gross weight approx.	50 kg
Shipping weight	49 kg

Pictograms

STANDARD

