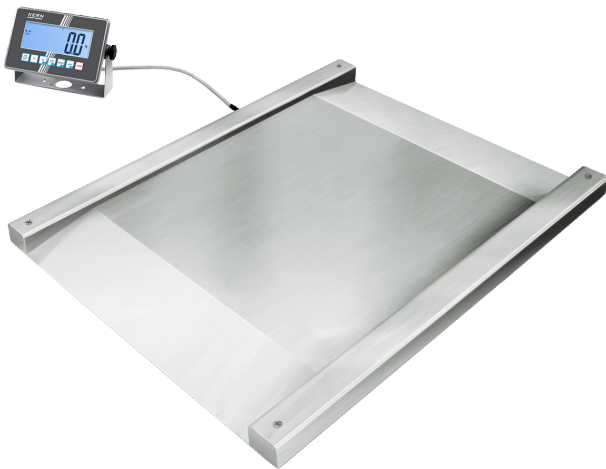


KERN NXC 1.5T-4M

Stainless steel drive-through scale (IP67) with stainless steel display device (IP68), verification optional



Display

Display type	LCD
Display type	LCD with backlight
Display backlight	✓
Display screen size	160×60 mm
Display segments	6
Display digit height	48 mm
Languages of the user interface	English Symbol language

Construction

Dimension display device (W×D×H)	232×150×77,3 mm
Dimensions weighing surface (W×D)	1000×1000 mm
Dimensions weighing surface	1000×1000 mm
Dimensions weighing platform (W×D×H)	1600×1220×95 mm
Material weighing plate	stainless steel
Material platform	stainless steel
Material display housing	stainless steel
Material load cell(s)	stainless steel
Level indicator	✓
Levelling feet adjustable	✓
Stand rotatable	no
Stand inclinable	no
Wall mount	✓
Display device cable length	5 m
Platform Construction	Welded load plate; smooth surface
Load cells - number	4

Functions

PreTare function	✓
Sum memory function	✓
Recipe/summing level	Sum A
Percentage determination	✓
Tolerance weighing	✓
Tolerance weighing - type of signal	acoustically
Alibi memory	optional internal memory
Alibi memory - number of memory spaces	250.000
Function for averaging under unstable weighing conditions	✓
Counting function	✓
Counting resolution (laboratory conditions)	3.000
Counting reference weight can be entered	✓

Category

Brand	KERN
Product category	Industrial scale
Product group	Drive-through scale
Product family	NXC

Measuring System

Weighing system	Strain gauge
Number of weighing ranges	1
Weighing capacity [Max]	1500 kg
Readability [d]	0,5 kg
Reproducibility	0,5 kg
Linearity	± 0,5 kg
Minimum weight [Min] (verifiable)	10 kg
Resolution	3.000
Adjustment options	Adjusting with external weight
Recommended adjusting weight	1500 kg (M1)
Stabilization time	3 s
Linearisation in dots	2
Eccentric loading at 1/3 [Max]	0,5 kg
Conformity assessment possible	✓
Construction type of the scale	Single-range balance
Units	kg g ffa PCS %
Units (if device is conformity assessed)	kg g
Load cell connection	6-wire
Default unit	kg
Loadcell type	ZEMIC BM8H 1 ton

KERN NXC 1.5T-4M

Stainless steel drive-through scale (IP67) with stainless steel display device (IP68), verification optional

Smallest piece weight when piece counting - laboratory conditions	500 g
Smallest piece weight when piece counting - normal conditions	5 kg
Reference quantity	5, 10, 20, 50, n (any number of pieces)
Hold function	✓
IP protection - complete device	-
IP protection - display	IP68
IP protection - platform	IP67
IP protection - load cell	IP68
	5 min
	2 min
Auto-off interval(s) in battery mode/rechargeable battery mode	1 min
	30 min
	60 min
	30 sec
Auto-off interval(s) in mains power mode	off
Tare function	manual (multi)
Number of keys for operation	7

Interface

	RS-232 (optional, factory)
	Ethernet (optional, factory)
	WiFi (optional, factory)
	Alibi memory (optional, factory)
Interfaces	analogue (0 - 10 V) (optional, factory)
	analogue (4 - 20 mA) (optional, factory)
	Bluetooth BLE (v4.0) (optional, factory)
	USB-Device (optional, factory)
compatible with EasyTouch	✓

Power Supply

Supplied power supply	Power supply unit
Power supply type	Built-in power supply
Plug-in power supply / adapter for countries - included with the delivery	EURO
Input voltage power supply / power [Max]	110 V - 240 V AC
Power supply cable removable	fixed connection
Power socket for mains adapter	Cable permanently installed

Battery / accumulator type	Li-Ion
Battery	no battery
Rechargeable battery operating time - backlight on	11 h
Rechargeable battery operating time - backlight off	22 h
Rechargeable battery charging time	8 h
Rechargeable battery optional	Rchrg. battery optional - intern

Environmental conditions

Ambient temperature [Min]	-10 °C
Ambient temperature [Max]	40 °C
Humidity of environment [Min]	0 %
Humidity of environment [Max]	80 %

Approval

CE mark	✓
Conformity assessment possible ex works	✓
Accuracy classe	III
Verification scale interval [e]	0,5 kg

Services (optional)

Article number for adjustment at the location of installation	961-250
Article number for conformity assessment	965-230
Article number for DAkkS calibration	963-130
Article number for certificate of conformity	969-517

Packing & Shipping

Delivery time	2 d
Dimensions packaging (W×D×H)	1660×1320×360 mm
Shipping method	Freight
Net weight approx.	130 kg
Gross weight approx.	195 kg
Shipping weight	193 kg
Shipping volume weight	157,8 kg

Product information

GTIN/EAN number	4045761481480
Trade number	84238220
REACH classification	no prohibited substances

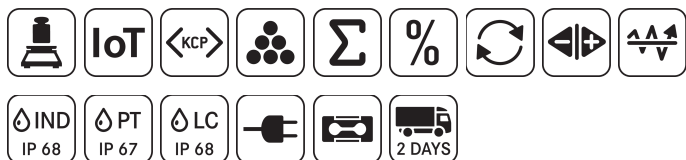
KERN NXC 1.5T-4M



Stainless steel drive-through scale (IP67) with stainless steel display device (IP68), verification optional

Pictograms

STANDARD



OPTION



FACTORY

