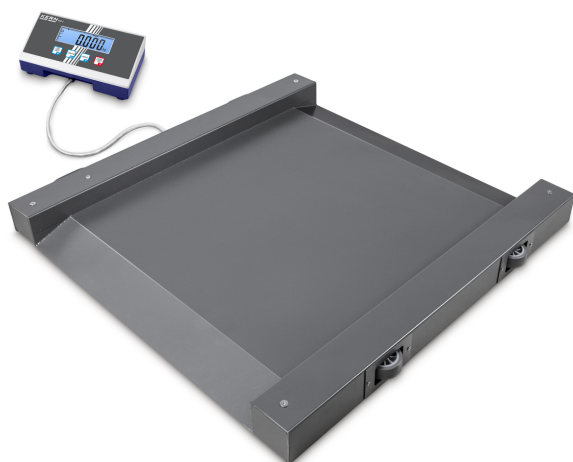


KERN NIB 300K-1

Compact, robust drive-through scale – particularly mobile thanks to its carrying handle, rollers and lightweight construction



Display digit height	25 mm
----------------------	-------

Construction

Dimensions completely mounted (W×D×H)	1100×1000×80 mm
---------------------------------------	-----------------

Dimension display device (W×D×H)	235×114×51 mm
----------------------------------	---------------

Dimensions weighing surface (W×D)	800×800 mm
-----------------------------------	------------

Dimensions weighing surface	800×800 mm
-----------------------------	------------

Dimensions weighing platform (W×D×H)	1000×1000×40 mm
--------------------------------------	-----------------

Material housing	steel, lacquered
------------------	------------------

Material weighing plate	steel, lacquered
-------------------------	------------------

Material platform	steel, varnished
-------------------	------------------

Material display housing	Plastics
--------------------------	----------

Material load cell(s)	alloyed steel
-----------------------	---------------

Level indicator	✓
-----------------	---

Levelling feet adjustable	✓
---------------------------	---

Wall mount	✓
------------	---

Transport wheels	✓
------------------	---

Cable length	5 m
--------------	-----

Display device cable length	5 m
-----------------------------	-----

Allowed cable length display device [Max]	15 m
---	------

Platform Construction	Welded load plate; smooth surface
-----------------------	-----------------------------------

Load cells - number	4
---------------------	---

Functions

Function for BMI calculation	✓
------------------------------	---

IP protection - complete device	-
---------------------------------	---

IP protection - display	no IP protection
-------------------------	------------------

IP protection - platform	IP67
--------------------------	------

IP protection - load cell	IP67
---------------------------	------

	3 min
--	-------

Auto-off interval(s) in battery mode/rechargeable battery mode	5 min
--	-------

	30 min
	15 min

Tare function	manual (single & multi)
---------------	-------------------------

Number of keys for operation	6
------------------------------	---

Power Supply

Supplied power supply	Power supply & battery function (battery not included)
-----------------------	--

Plug-in power supply type	Power adapter
---------------------------	---------------

Plug-in power supply / adapter for countries - included with the delivery	EURO AUS UK
---	-------------------

Category

Brand	KERN
Product category	Industrial scale
Product group	Drive-through scale
Product family	NIB

Measuring System

Construction type of the scale	Single-range balance
--------------------------------	----------------------

Weighing system	Strain gauge
-----------------	--------------

Weighing capacity [Max]	300 kg
-------------------------	--------

Readability [d]	0,1 kg
-----------------	--------

Reproducibility	0,1 kg
-----------------	--------

Linearity	± 0,3 kg
-----------	----------

Resolution	3.000
------------	-------

Tare range	-299,9 kg
------------	-----------

Adjustment options	Adjusting with external weight
--------------------	--------------------------------

Recommended adjusting weight	300 kg (M1)
------------------------------	-------------

Warm-up time	10 min
--------------	--------

Eccentric loading at 1/3 [Max]	0,5 kg
--------------------------------	--------

Maximum creep (15 minutes)	400 g
----------------------------	-------

Maximum creep (30 minutes)	800 g
----------------------------	-------

Default unit	kg
--------------	----

Units	kg lb
-------	----------

Loadcell type	aluminium silicone-coated
---------------	---------------------------

Load cell connection	4-wire
----------------------	--------

Display

Display type	LCD
--------------	-----

Display digit height - smallest digit	25 mm
---------------------------------------	-------

KERN NIB 300K-1

KERN

Compact, robust drive-through scale – particularly mobile thanks to its carrying handle, rollers and lightweight construction

	US CH
	EURO
Plug-in power supply / adapter for countries - optional	AUS UK US
Input voltage power supply / power [Max]	100 V - 240 V AC 50/60 Hz 0,3 A
Input voltage device / power [Max]	9 V, 100 mA
Battery / accumulator type	Alkali(-Manganese)
Battery	4× 1.5 V AA
Battery connection	Pad + Spring
Battery operating time	60 h

Environmental conditions	
Ambient temperature [Min]	-10 °C
Ambient temperature [Max]	40 °C
Humidity of environment [Min]	5 %
Humidity of environment [Max]	80 %

Approval	
CE mark	✓

Services (optional)	
Article number for adjustment at the location of installation	961-249
Article number for DAkkS calibration	963-129
Article number for certificate of conformity (verification)	969-517

Packing & Shipping	
Delivery time	2 d
Dimensions packaging (W×D×H)	1135×1060×200 mm
Net weight	40 kg
Shipping method	Freight
Net weight approx.	40 kg
Gross weight approx.	65 kg
Shipping weight	62 kg

Pictograms

STANDARD



OPTION

