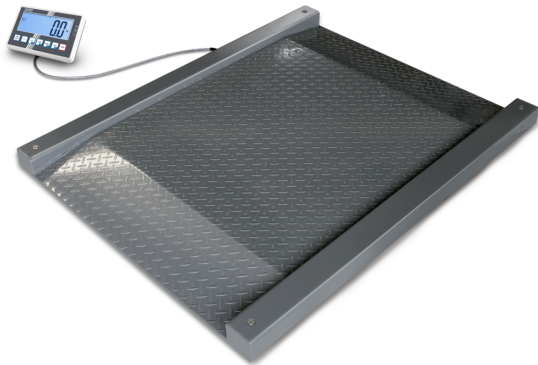


# KERN NFC 1.5T-4LM

Networkable drive-through scale (IP67), verification optional



## Display

Display type	LCD
Display type	LCD with backlight
Display backlight	✓
Display screen size	160×60 mm
Display segments	6
Display digit height	48 mm
Languages of the user interface	English Symbol language

## Construction

Dimension display device (W×D×H)	220×150×66,5 mm
Dimensions weighing surface (W×D)	1200×1200 mm
Dimensions weighing surface	1200×1200 mm
Dimensions weighing platform (W×D×H)	1800×1420×95 mm
Material weighing plate	steel, powder-coated
Material platform	steel, powder-coated
Material display housing	plastic
Material load cell(s)	alloyed steel
Level indicator	✓
Levelling feet adjustable	✓
Stand rotatable	no
Stand inclinable	no
Wall mount	✓
Display device cable length	5 m
Platform Construction	Welded load plate; chequer plate
Load cells - number	4

## Functions

PreTare function	✓
Sum memory function	✓
Recipe/summing level	Sum A
Percentage determination	✓
Tolerance weighing	✓
Tolerance weighing - type of signal	acoustically visual
Alibi memory	optional internal memory
Alibi memory - number of memory spaces	250.000
Function for averaging under unstable weighing conditions	✓
Counting function	✓
Counting resolution (laboratory conditions)	3.000

## Category

Brand	KERN
Product category	Industrial scale
Product group	Drive-through scale
Product family	NFC

## Measuring System

Weighing system	Strain gauge
Number of weighing ranges	1
Weighing capacity [Max]	1500 kg
Readability [d]	0,5 kg
Reproducibility	0,5 kg
Linearity	± 1,5 kg
Minimum weight [Min] (verifiable)	10 kg
Resolution	3.000
Adjustment options	Adjusting with external weight
Recommended adjusting weight	1500 kg (M1)
Stabilization time	3 s
Linearisation in dots	2
Eccentric loading at 1/3 [Max]	2,5 kg
Conformity assessment possible	✓
Construction type of the scale	Single-range balance
Units	kg g ffa PCS %
Units (if device is conformity assessed)	kg g
Load cell connection	6-wire
Default unit	kg
Loadcell type	ZEMIC H8C 1 ton

# KERN NFC 1.5T-4LM



Networkable drive-through scale (IP67), verification optional

Counting reference weight can be entered	✓
Smallest piece weight when piece counting - laboratory conditions	500 g
Smallest piece weight when piece counting - normal conditions	5 kg
Reference quantity	5, 10, 20, 50, n (any number of pieces)
Hold function	✓
IP protection - complete device	-
IP protection - display	no IP protection
IP protection - platform	IP67
IP protection - load cell	IP67
Auto-off interval(s) in battery mode/rechargeable battery mode	5 min
	2 min
	1 min
	30 min
	60 min
Auto-off interval(s) in mains power mode	30 sec
Auto-off interval(s) in mains power mode	off
Tare function	manual (multi)
Number of keys for operation	7

## Interface

Interfaces	RS-232 (optional)
	Ethernet (optional)
	Alibi memory (optional, factory)
	analogue (0 - 10 V) (optional)
	analogue (4 - 20 mA) (optional)
	Bluetooth BLE (v4.0) (optional)
	USB-Device (optional)
KUP	
WiFi (optional)	
compatible with EasyTouch	✓

## Power Supply

Supplied power supply	Power supply unit
Power supply type	Power adapter
Plug-in power supply / adapter for countries - included with the delivery	EURO
	UK
	US
	CH
Plug-in power supply / adapter for countries - optional	EURO
	UK
	US
	CH

Input voltage power supply / power [Max]	100 V - 240 V, 50 / 60 Hz
Power supply cable removable	removable
Input voltage device / power [Max]	5,9V, 1A
Power socket for mains adapter	Hollow plug, inside plus, Ø outside 5,5 mm, Ø inside 2,1 mm, long 13 mm
Battery / accumulator type	Li-Ion
Battery	3 V CR2032
Battery capacity	210 mAh
Battery voltage	3 V
Battery - Number of cells	1
Battery - Individual weight	3,2 g
Battery - Construction	Individual cells
Battery capacity (Wh)	0,66 Wh
Battery - Lithium content	64 mg
Battery - Tests passed UN 38.3	✓
Rechargeable battery operating time - backlight on	11 h
Rechargeable battery operating time - backlight off	22 h
Rechargeable battery charging time	8 h
Rechargeable battery optional	Rchrg. battery optional - intern

## Environmental conditions

Ambient temperature [Min]	-10 °C
Ambient temperature [Max]	40 °C
Humidity of environment [Min]	0 %
Humidity of environment [Max]	80 %

## Approval

CE mark	✓
Conformity assessment possible ex works	✓
Accuracy classe	III
Verification scale interval [e]	0,5 kg

## Services (optional)

Article number for adjustment at the location of installation	961-250
Article number for conformity assessment	965-230
Article number for DAkKS calibration	963-130
Article number for certificate of conformity	969-517

# KERN NFC 1.5T-4LM



Networkable drive-through scale (IP67), verification optional

## Packing & Shipping

Delivery time	2 d
Dimensions packaging (W×D×H)	1860×1520×360 mm
Shipping method	Freight
Net weight approx.	165 kg
Gross weight approx.	245 kg
Shipping weight	242 kg
Shipping volume weight	203,6 kg

## Product information

GTIN/EAN number	4045761481503
Trade number	84238220
REACH classification	no prohibited substances

## Pictograms

### STANDARD



### OPTION



### FACTORY

