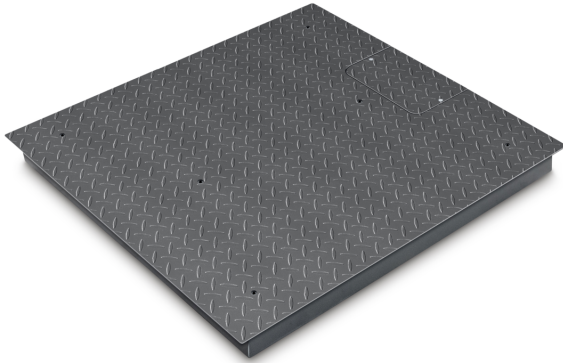


KERN KFP 6000V20M

KERN

Platform: weighing plate of stainless steel, painted steel base, silicone-coated aluminium load cell with protection against dust and water splashes IP65



Category

Brand	KERN
Product category	Component
Product group	Weighing bridge
Product family	KFP-V20-IP65

Measuring System

Weighing capacity [Max]	6000 kg
Readability [d]	2 kg
Minimum weight [Min]	40 kg
Load cell connection	6-wire
Loadcell type	ZEMIC H8C 2.5 ton

Construction

Dimensions weighing surface (W×D)	1500×1500 mm
Dimensions weighing surface	1500×1500 mm
Dimensions weighing platform (W×D×H)	1500×1500×123 mm
Material weighing plate	steel, powder-coated
Material platform	steel, powder-coated
Material load cell(s)	alloyed steel
Material substructure	steel, powder-coated
Levelling feet adjustable	✓
Cable length	5 m
Platform Construction	Welded load plate; chequer plate
Load cells - number	4
Nominal load capacity (WLL)	9000 kg

Functions

IP protection - platform	IP67
IP protection - load cell	IP67

Approval

Conformity assessment possible ex works	✓
Verification scale interval [e]	2 kg

Services (optional)

Article number for conformity assessment	965-232
Article number for DAkkS calibration	963-132

Packing & Shipping

Delivery time	2 d
Dimensions packaging (W×D×H)	1615×1580×360 mm
Shipping method	Freight
Net weight approx.	225 kg
Gross weight approx.	290 kg
Shipping weight	287 kg

Product information

GTIN/EAN number	4045761493933
Trade number	90318080
REACH classification	no prohibited substances

Pictograms

STANDARD



FACTORY

