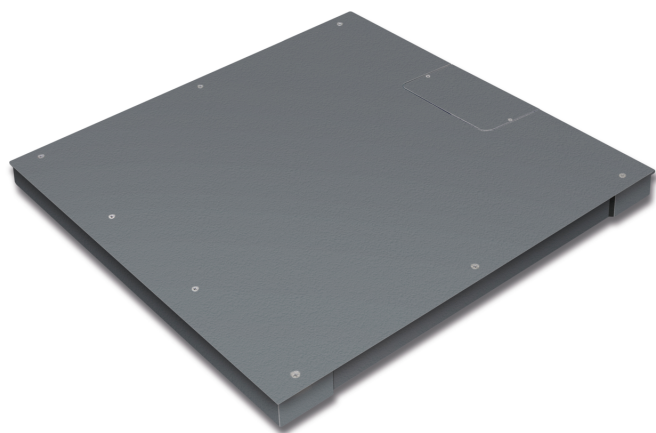


KERN KFP 3000V20LNM

Platform: weighing plate of stainless steel, painted steel base, silicone-coated aluminium load cell with protection against dust and water splashes IP65



Approval

Conformity assessment possible ex works	✓
Verification scale interval [e]	1 kg

Services (optional)

Article number for conformity assessment	965-232
Article number for DAkkS calibration	963-132

Packing & Shipping

Delivery time	2 d
Dimensions packaging (W×D×H)	1615×1580×360 mm
Shipping method	Freight
Net weight approx.	175 kg
Gross weight approx.	235 kg
Shipping weight	234 kg

Product information

GTIN/EAN number	4045761493919
Trade number	90318080
REACH classification	no prohibited substances

Pictograms

STANDARD



FACTORY



Category

Brand	KERN
Product category	Component
Product group	Weighing bridge
Product family	KFP-V20-IP65

Measuring System

Weighing capacity [Max]	3000 kg
Readability [d]	1 kg
Minimum weight [Min]	20 kg
Load cell connection	6-wire
Loadcell type	ZEMIC H8C 1.5 ton

Construction

Dimensions weighing surface (W×D)	1500×1500 mm
Dimensions weighing surface	1500×1500 mm
Dimensions weighing platform (W×D×H)	1500×1500×85 mm
Material weighing plate	steel, powder-coated
Material platform	steel, powder-coated
Material load cell(s)	alloyed steel
Material substructure	steel, powder-coated
Levelling feet adjustable	✓
Cable length	5 m
Platform Construction	Screwed load plate; smooth surface (unscrewable)
Load cells - number	4
Nominal load capacity (WLL)	4500 kg

Functions

IP protection - platform	IP67
IP protection - load cell	IP67