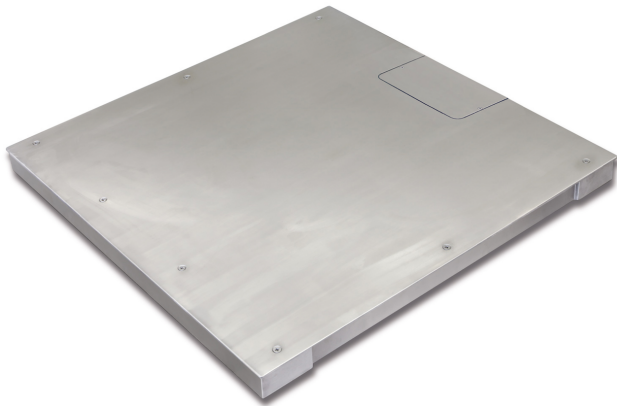


# KERN KFP 1500V40M

# KERN

Platform: entirely out of stainless steel



## Functions

IP protection - platform	IP67
IP protection - load cell	IP68

## Approval

Conformity assessment possible ex works	✓
Verification scale interval [e]	500 g

## Services (optional)

Article number for conformity assessment	965-230
Article number for DAkkS calibration	963-130

## Packing & Shipping

Delivery time	2 d
Dimensions packaging (W×D×H)	1615×1330×345 mm
Shipping method	Freight
Net weight approx.	150 kg
Gross weight approx.	205 kg
Shipping weight	201 kg

## Product information

GTIN/EAN number	4045761493889
Trade number	90318080
REACH classification	no prohibited substances

## Pictograms

### STANDARD



### FACTORY



## Category

Brand	KERN
Product category	Component
Product group	Weighing bridge
Product family	KFP-V40-IP68

## Measuring System

Weighing capacity [Max]	1500 kg
Readability [d]	500 g
Minimum weight [Min]	10 kg
Load cell connection	6-wire
Loadcell type	ZEMIC BM8H 1 ton

## Construction

Dimensions weighing surface (W×D)	1500×1250 mm
Dimensions weighing surface	1500×1250 mm
Dimensions weighing platform (W×D×H)	1500×1250×85 mm
Material weighing plate	stainless steel
Material platform	stainless steel
Material load cell(s)	stainless steel
Material substructure	stainless steel
Levelling feet adjustable	✓
Cable length	5 m
Platform Construction	Screwed load plate; smooth surface (unscrewable)
Load cells - number	4
Nominal load capacity (WLL)	4500 kg