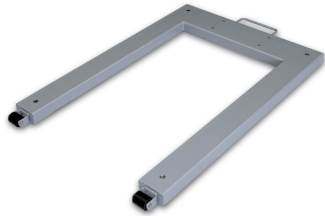


KERN KFU 1500V20M

U-Weighing bridge, Load range: painted steel

KERN



Category

Brand	KERN
Product category	Component
Product group	Weighing bridge
Product family	KFU-V20-IP67

Measuring System

Weighing capacity [Max]	1500 kg
Readability [d]	500 g
Minimum weight [Min]	10 kg
Load cell connection	6-wire
Loadcell type	ZEMIC H8C 1 ton

Construction

Dimensions weighing surface (WxD)	1190x840 mm
Dimensions weighing surface	1190x840 mm
Dimensions weighing platform (WxDxH)	1361x840x80 mm
Material weighing plate	steel, powder-coated
Material platform	steel, powder-coated
Material load cell(s)	alloyed steel
Material substructure	steel, powder-coated
Levelling feet adjustable	✓
Transport wheels	✓
Cable length	5 m
Platform Construction	Welded load plate; smooth surface
Load cells - number	4
Nominal load capacity (WLL)	2250 kg

Functions

IP protection - platform	IP67
IP protection - load cell	IP67

Approval

Conformity assessment possible ex works	✓
Verification scale interval [e]	500 g

Services (optional)

Article number for conformity assessment	965-230
Article number for DAkkS calibration	963-130

Packing & Shipping

Delivery time	2 d
Dimensions packaging (WxDxH)	1405x890x315 mm
Shipping method	Freight
Net weight approx.	55 kg
Gross weight approx.	90 kg
Shipping weight	88 kg

Product information

GTIN/EAN number	4045761493766
Trade number	90318080
REACH classification	no prohibited substances

Pictograms

STANDARD



FACTORY

