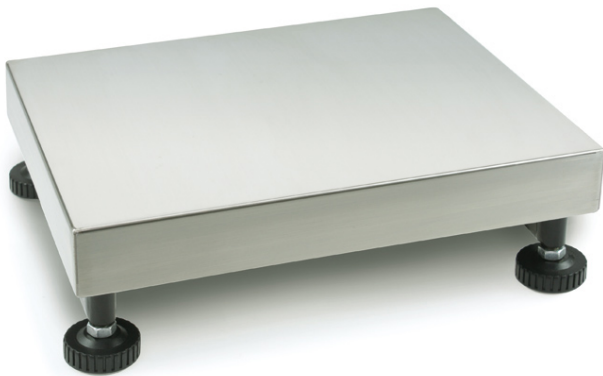


KERN KFP 6V20M

KERN

Platform: weighing plate of stainless steel, painted steel base, silicone-coated aluminium load cell with protection against dust and water splashes IP65



Approval

Conformity assessment possible ex works	✓
Verification scale interval [e]	1 g; 2 g

Services (optional)

Article number for conformity assessment	965-228
Article number for DAkkS calibration	963-128

Packing & Shipping

Delivery time	1 d
Dimensions packaging (W×D×H)	490×340×220 mm
Shipping method	Parcel service
Net weight approx.	4,4 kg
Gross weight approx.	6 kg
Shipping weight	7,3 kg

Pictograms

STANDARD



FACTORY



Category

Brand	KERN
Product category	Component
Product group	Platform
Product family	KFP-V20-IP65

Measuring System

Weighing capacity [Max]	6 kg
Readability [d]	200 mg
Minimum weight [Min]	20 g; 40 g
Loadcell type	aluminium IP65 silicone-coated
Load cell connection	4-wire
Load cell OIML class	C3

Construction

Dimensions weighing surface (W×D)	230×230 mm
Dimensions weighing surface	230×230 mm
Dimensions weighing platform (W×D×H)	230×230×106 mm
Material weighing plate	stainless steel
Material platform	steel, powder-coated
Material load cell(s)	aluminium
Levelling feet adjustable	✓
Transport safety lock - bolt torque	0,1 Nm
Cable length	2,5 m
Allowed cable length display device [Max]	3 m
Platform Construction	Single-Cell
Load cells - number	1

Functions

IP protection - load cell	IP65
---------------------------	------