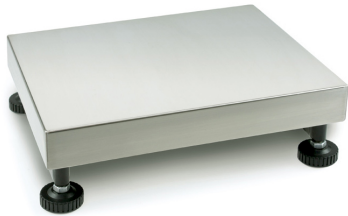


# KERN KFP 600V20AM

**KERN**

Platform: weighing plate of stainless steel, painted steel base, silicone-coated aluminium load cell with protection against dust and water splashes IP65



## Functions

IP protection - load cell	IP65
---------------------------	------

## Approval

Conformity assessment possible ex works	✓
Verification scale interval [e]	200 g

## Services (optional)

Article number for conformity assessment	965-230
Article number for DAkkS calibration	963-130

## Packing & Shipping

Delivery time	2 d
Dimensions packaging (W×D×H)	850×1250×240 mm
Shipping method	Freight
Net weight approx.	42 kg
Gross weight approx.	55 kg
Shipping weight	55 kg

## Product information

GTIN/EAN number	4045761250093
Trade number	90318080
REACH classification	no prohibited substances

## Pictograms

### STANDARD



### FACTORY



## Category

Brand	KERN
Product category	Component
Product group	Platform
Product family	KFP-V20-IP65

## Measuring System

Weighing capacity [Max]	600 kg
Readability [d]	20 g
Minimum weight [Min]	4 kg
Load cell connection	6-wire
Load cell OIML class	C3
Loadcell type	aluminium IP65 silicone-coated

## Construction

Dimensions weighing surface (W×D)	800×600 mm
Dimensions weighing surface	800×600 mm
Dimensions weighing platform (W×D×H)	800×600×192 mm
Material weighing plate	stainless steel
Material platform	steel, powder-coated
Material load cell(s)	aluminium
Levelling feet adjustable	✓
Cable length	2,5 m
Allowed cable length display device [Max]	20 m
Platform Construction	Single-Cell
Load cells - number	1