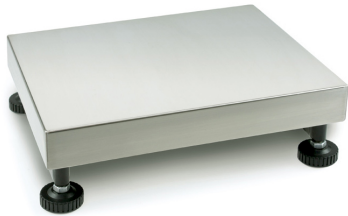


# KERN KFP 30V20SM

# KERN

Platform: weighing plate of stainless steel, painted steel base, silicone-coated aluminium load cell with protection against dust and water splashes IP65



## Functions

IP protection - load cell IP65

## Environmental conditions

Ambient temperature [Max] 40 °C

## Approval

Conformity assessment possible ex works ✓  
Verification scale interval [e] 5 g; 10 g

## Services (optional)

Article number for conformity assessment 965-228  
Article number for DAkkS calibration 963-128

## Packing & Shipping

Delivery time 1 d  
Dimensions packaging (W×D×H) 693×414×225 mm  
Shipping method Parcel service  
Net weight approx. 3,8 kg  
Gross weight approx. 6 kg  
Shipping weight 12,9 kg

## Product information

GTIN/EAN number 4045761250154  
Trade number 90318080  
REACH classification no prohibited substances

## Pictograms

### STANDARD



### FACTORY



## Category

Brand KERN  
Product category Component  
Product group Platform  
Product family KFP-V20-IP65

## Measuring System

Weighing capacity [Max] 15 kg; 30 kg  
Readability [d] 1 g  
Minimum weight [Min] 100 g; 200 g  
Load cell connection 4-wire  
Load cell OIML class C3  
Loadcell type aluminium IP65 silicone-coated

## Construction

Dimensions weighing surface (W×D) 300×240 mm  
Dimensions weighing surface 300×240 mm  
Dimensions weighing platform (W×D×H) 300×240×109 mm  
Material weighing plate stainless steel  
Material platform steel, powder-coated  
Material load cell(s) aluminium  
Levelling feet adjustable ✓  
Transport safety lock - bolt torque 0,1 Nm  
Cable length 2,5 m  
Allowed cable length display device [Max] 3 m  
Platform Construction Single-Cell  
Load cells - number 1