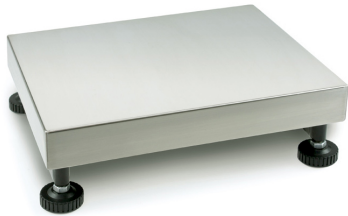


KERN KFP 15V20M

KERN

Platform: weighing plate of stainless steel, painted steel base, silicone-coated aluminium load cell with protection against dust and water splashes IP65



Functions

IP protection - load cell	IP65
---------------------------	------

Approval

Conformity assessment possible ex works	✓
Verification scale interval [e]	2 g; 5 g

Services (optional)

Article number for conformity assessment	965-228
Article number for DAkkS calibration	963-128

Packing & Shipping

Delivery time	1 d
Dimensions packaging (W×D×H)	695×410×225 mm
Shipping method	Parcel service
Net weight approx.	3,8 kg
Gross weight approx.	7 kg
Shipping weight	12,8 kg

Product information

GTIN/EAN number	4045761250192
Trade number	90318080
REACH classification	no prohibited substances

Pictograms

STANDARD



FACTORY



Category

Brand	KERN
Product category	Component
Product group	Platform
Product family	KFP-V20-IP65

Measuring System

Weighing capacity [Max]	6 kg; 15 kg
Readability [d]	500 mg
Minimum weight [Min]	40 g; 100 g
Load cell connection	4-wire
Load cell OIML class	C3
Loadcell type	aluminium IP65 silicone-coated

Construction

Dimensions weighing surface (W×D)	300×240 mm
Dimensions weighing surface	300×240 mm
Dimensions weighing platform (W×D×H)	300×240×109 mm
Material weighing plate	stainless steel
Material platform	steel, powder-coated
Material load cell(s)	aluminium
Levelling feet adjustable	✓
Transport safety lock - bolt torque	0,1 Nm
Cable length	2,5 m
Allowed cable length display device [Max]	3 m
Platform Construction	Single-Cell
Load cells - number	1