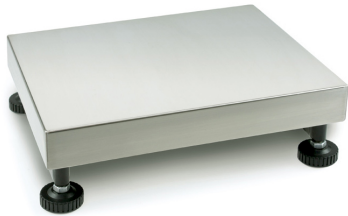


# KERN KFP 150V20LM

# KERN

Platform: weighing plate of stainless steel, painted steel base, silicone-coated aluminium load cell with protection against dust and water splashes IP65



## Functions

|                           |      |
|---------------------------|------|
| IP protection - load cell | IP65 |
|---------------------------|------|

## Approval

|   |            |
|---|------------|
| Conformity assessment possible ex works | ✓          |
| Verification scale interval [e]         | 20 g; 50 g |

## Services (optional)

|  |         |
|--|---------|
| Article number for conformity assessment | 965-229 |
| Article number for DAkkS calibration     | 963-129 |

## Packing & Shipping

|                              |                 |
|------------------------------|-----------------|
| Delivery time                | 1 d             |
| Dimensions packaging (W×D×H) | 670×1050×245 mm |
| Shipping method              | Parcel service  |
| Net weight approx.           | 19 kg           |
| Gross weight approx.         | 24 kg           |
| Shipping weight              | 34,5 kg         |

## Product information

|                      |                          |
|----------------------|--------------------------|
| GTIN/EAN number      | 4045761249974            |
| Trade number         | 90318080                 |
| REACH classification | no prohibited substances |

## Pictograms

### STANDARD



### FACTORY



## Category

|                  |              |
|------------------|--------------|
| Brand            | KERN         |
| Product category | Component    |
| Product group    | Platform     |
| Product family   | KFP-V20-IP65 |

## Measuring System

|                         |                                |
|-------------------------|--------------------------------|
| Weighing capacity [Max] | 60 kg; 150 kg                  |
| Readability [d]         | 5 g                            |
| Minimum weight [Min]    | 400 g; 1 kg                    |
| Load cell connection    | 6-wire                         |
| Load cell OIML class    | C3                             |
| Loadcell type           | aluminium IP65 silicone-coated |

## Construction

|   |                      |
|---|----------------------|
| Dimensions weighing surface (W×D)         | 650×500 mm           |
| Dimensions weighing surface               | 650×500 mm           |
| Dimensions weighing platform (W×D×H)      | 650×500×139 mm       |
| Material weighing plate                   | stainless steel      |
| Material platform                         | steel, powder-coated |
| Material load cell(s)                     | aluminium            |
| Levelling feet adjustable                 | ✓                    |
| Cable length                              | 2,5 m                |
| Allowed cable length display device [Max] | 3 m                  |
| Platform Construction                     | Single-Cell          |
| Load cells - number                       | 1                    |