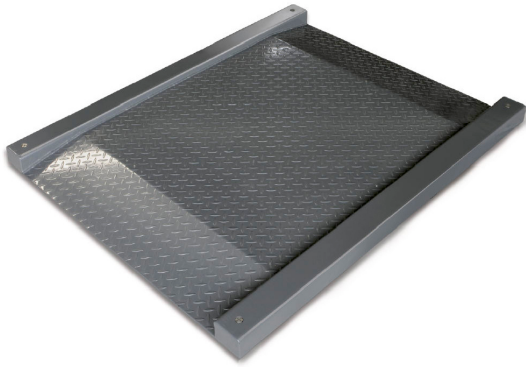


# KERN KFD 1500V20M

# KERN

Weighing bridge made of non-slip corrugated steel plate, lacquered



IP protection - load cell IP67

## Approval

Conformity assessment possible ex works	✓
Verification scale interval [e]	500 g

## Services (optional)

Article number for conformity assessment	965-230
Article number for DAkkS calibration	963-130

## Packing & Shipping

Delivery time	2 d
Dimensions packaging (W×D×H)	1660×1320×360 mm
Shipping method	Freight
Net weight approx.	130 kg
Gross weight approx.	180 kg
Shipping weight	179 kg

## Product information

GTIN/EAN number	404576 1493698
Trade number	90318080
REACH classification	no prohibited substances

## Pictograms

### STANDARD



### FACTORY



## Category

Brand	KERN
Product category	Component
Product group	Weighing bridge
Product family	KFD-V20-IP67

## Measuring System

Weighing capacity [Max]	1500 kg
Readability [d]	500 g
Minimum weight [Min]	10 kg
Load cell connection	6-wire
Loadcell type	ZEMIC H8C 1 ton

## Construction

Dimensions weighing surface (W×D)	1000×1000 mm
Dimensions weighing surface	1000×1000 mm
Dimensions weighing platform (W×D×H)	1600×1220×95 mm
Material weighing plate	steel, powder-coated
Material platform	steel, powder-coated
Material load cell(s)	alloyed steel
Material substructure	steel, powder-coated
Levelling feet adjustable	✓
Cable length	5 m
Platform Construction	Welded load plate; chequer plate
Load cells - number	4
Nominal load capacity (WLL)	2250 kg

## Functions

IP protection - platform	IP67
--------------------------	------