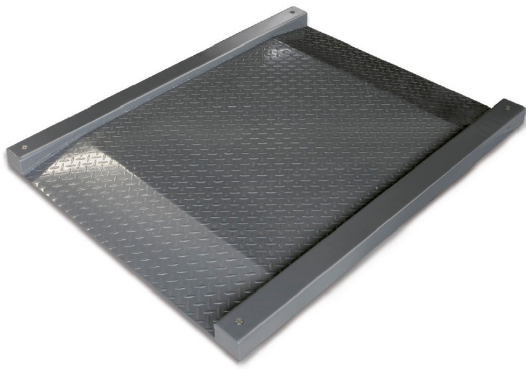


KERN KFD 1500V20LM

KERN

Weighing bridge made of non-slip corrugated steel plate, lacquered



IP protection - load cell IP67

Approval

Conformity assessment possible ex works	✓
Verification scale interval [e]	500 g

Services (optional)

Article number for conformity assessment	965-230
Article number for DAkkS calibration	963-130

Packing & Shipping

Delivery time	2 d
Dimensions packaging (W×D×H)	1860×1520×360 mm
Shipping method	Freight
Net weight approx.	165 kg
Gross weight approx.	245 kg
Shipping weight	242 kg

Product information

GTIN/EAN number	404576 1493636
Trade number	90318080
REACH classification	no prohibited substances

Pictograms

STANDARD



FACTORY



Category

Brand	KERN
Product category	Component
Product group	Weighing bridge
Product family	KFD-V20-IP67

Measuring System

Weighing capacity [Max]	1500 kg
Readability [d]	500 g
Minimum weight [Min]	10 kg
Load cell connection	6-wire
Loadcell type	ZEMIC H8C 1 ton

Construction

Dimensions weighing surface (W×D)	1200×1200 mm
Dimensions weighing surface	1200×1200 mm
Dimensions weighing platform (W×D×H)	1800×1420×95 mm
Material weighing plate	steel, powder-coated
Material platform	steel, powder-coated
Material load cell(s)	alloyed steel
Material substructure	steel, powder-coated
Levelling feet adjustable	✓
Cable length	5 m
Platform Construction	Welded load plate; chequer plate
Load cells - number	4
Nominal load capacity (WLL)	2250 kg

Functions

IP protection - platform	IP67
--------------------------	------