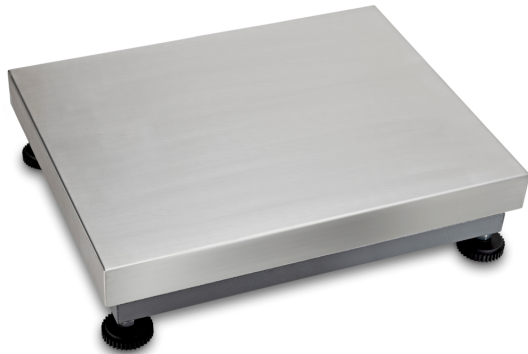


# KERN KBP 15V20M

Platform: weighing plate of stainless steel, painted steel base, silicone-coated aluminium load cell with protection against dust and water splashes IP65



## Functions

IP protection - load cell	IP65
---------------------------	------

## Environmental conditions

Ambient temperature [Min]	-10 °C
Ambient temperature [Max]	40 °C

## Approval

Conformity assessment possible ex works	✓
Verification scale interval [e]	2 g; 5 g

## Services (optional)

Article number for conformity assessment	965-228
Article number for DAkkS calibration	963-128

## Packing & Shipping

Delivery time	1 d
Dimensions packaging (W×D×H)	710×330×122 mm
Shipping method	Parcel service
Net weight approx.	3,8 kg
Gross weight approx.	7 kg
Shipping weight	7 kg

## Product information

GTIN/EAN number	404576 1475809
Trade number	90318080
REACH classification	no prohibited substances

## Pictograms

### STANDARD



### FACTORY



## Category

Brand	KERN
Product category	Component
Product group	Platform
Product family	KBP-V20-IP65

## Measuring System

Weighing capacity [Max]	6 kg; 15 kg
Readability [d]	500 mg
Minimum weight [Min]	40 g; 100 g
Load cell connection	4-wire
Load cell - Resolution (verifiable)	2 × 3000 e
Loadcell type	aluminium IP65 silicone-coated

## Construction

Dimensions weighing surface (W×D)	300×240 mm
Dimensions weighing surface	300×240 mm
Dimensions weighing platform (W×D×H)	300×240×110 mm
Material weighing plate	stainless steel
Material platform	steel, lacquered
Material load cell(s)	aluminium
Material substructure	steel, lacquered
Levelling feet adjustable	✓
Transport safety lock - bolt torque	0 mNm
Cable length	2,5 m
Allowed cable length display device [Max]	3 m
Platform Construction	Single-Cell
Load cells - number	1