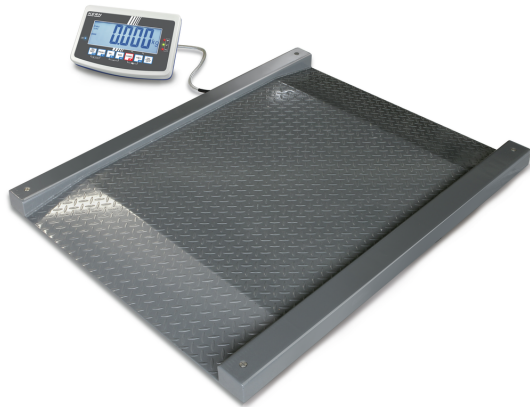


KERN NFB 1.5T0.5LM

Drive-through scale (IP67) with XXL display device, verification optional



Display segments	5 + 1/2
Display digit height	52 mm
Languages of the user interface	Symbol language

Construction

Dimension housing (W×D×H)	1420×1800×85 mm
Dimension display device (W×D×H)	250×160×58 mm
Dimensions weighing surface (W×D)	1200×1200 mm
Dimensions weighing surface	1200×1200 mm
Dimensions weighing platform (W×D×H)	1800×1400×80 mm
Material weighing plate	steel, lacquered
Material platform	steel, varnished
Material display housing	Plastics
Material load cell(s)	alloyed steel
Level indicator	✓
Levelling feet adjustable	✓
Stand inclinable	✓
Wall mount	✓
Cable length	5 m
Display device cable length	5 m
Allowed cable length display device [Max]	30 m
Platform Construction	Welded load plate; chequer plate
Load cells - number	4

Functions

Sum memory function	✓
Recipe/summing level	Sum A
Tolerance weighing	✓
Tolerance weighing - type of signal	acoustically visual
Underfloor weighing	None
Function for averaging under unstable weighing conditions	✓
Counting function	✓
Reference quantity	10, 20, 50, 100, 200
IP protection - display	no IP protection
IP protection - load cell	IP67
Auto-off interval(s) in battery mode/rechargeable battery mode	selectable
Auto-off interval(s) in mains power mode	selectable
Tare function	manual (single & multi)
Number of keys for operation	7

Category

Brand	KERN
Product category	Industrial scale
Product group	Drive-through scale
Product family	NFB

Measuring System

Construction type of the scale	Single-range balance
Weighing system	Strain gauge
Number of weighing ranges	1
Weighing capacity [Max]	1500 kg
Readability [d]	0,5 kg
Reproducibility	0,5 kg
Linearity	± 1,5 kg
Minimum weight [Min]	10 kg
Resolution	3.000
Tare range	-1500 kg
Adjustment options	Adjusting with external weight
Recommended adjusting weight	1500 kg (M2)
Stabilization time	2 s
Warm-up time	10 min
Eccentric loading at 1/3 [Max]	2,5 kg
Default unit	kg
Units	kg
Units (if device is conformity assessed)	kg
Loadcell type	ZEMIC H8C 1 ton
Load cell connection	4-wire

Display

Display type	LCD
Display backlight	✓
Display screen size	165×64 mm

KERN NFB 1.5T0.5LM



Drive-through scale (IP67) with XXL display device, verification optional

Interface

Interfaces	RS-232 standard Bluetooth BTC (v2.0) (optional, factory) analogue (0 - 10 V) (optional, factory) analogue (4 - 20 mA) (optional, factory)
------------	---

EasyTouch (ET) - Connection type	RS232 (+optionale Schnittstellen)
----------------------------------	-----------------------------------

Power Supply

Supplied power supply	Power supply unit
-----------------------	-------------------

Plug-in power supply type	Power adapter
---------------------------	---------------

Plug-in power supply / adapter for countries - included with the delivery	EURO UK US CH
---	------------------------

Plug-in power supply / adapter for countries - optional	EURO AUS UK US CH
---	-------------------------------

Input voltage power supply / power [Max]	100 V - 240 V, 50 / 60 Hz
--	---------------------------

Input voltage device / power [Max]	12 V, 500 mA
------------------------------------	--------------

Battery / accumulator type	Pb
----------------------------	----

Battery	no battery
---------	------------

Rechargeable battery	6 V, 1.2 Ah
----------------------	-------------

Rechargeable battery operating time - backlight on	8 h
--	-----

Rechargeable battery operating time - backlight off	35 h
---	------

Rechargeable battery charging time	10 h
------------------------------------	------

Rechargeable battery optional	Rchrg. battery optional (factory)
-------------------------------	-----------------------------------

Environmental conditions

Ambient temperature [Min]	-10 °C
---------------------------	--------

Ambient temperature [Max]	40 °C
---------------------------	-------

Humidity of environment [Min]	0 %
-------------------------------	-----

Humidity of environment [Max]	80 %
-------------------------------	------

Approval

CE mark	✓
---------	---

Conformity assessment possible ex works	✓
---	---

Accuracy classe	III
-----------------	-----

Verification scale interval [e]	0,5 kg
---------------------------------	--------

Services (optional)

Article number for adjustment at the location of installation	961-250
---	---------

Article number for conformity assessment	965-230
--	---------

Article number for DAkkS calibration	963-130
--------------------------------------	---------

Article number for certificate of conformity (verification)	969-517
---	---------

Packing & Shipping

Delivery time	2 d
---------------	-----

Dimensions packaging (W×D×H)	1850×1510×380 mm
------------------------------	------------------

Net weight	163 kg
------------	--------

Shipping method	Freight
-----------------	---------

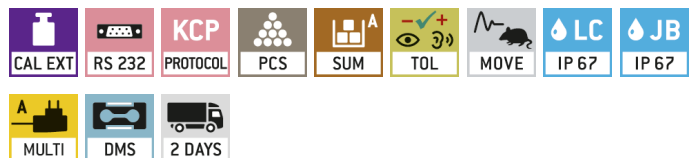
Net weight approx.	165 kg
--------------------	--------

Gross weight approx.	250 kg
----------------------	--------

Shipping weight	247 kg
-----------------	--------

Pictograms

STANDARD



OPTION



FACTORY

