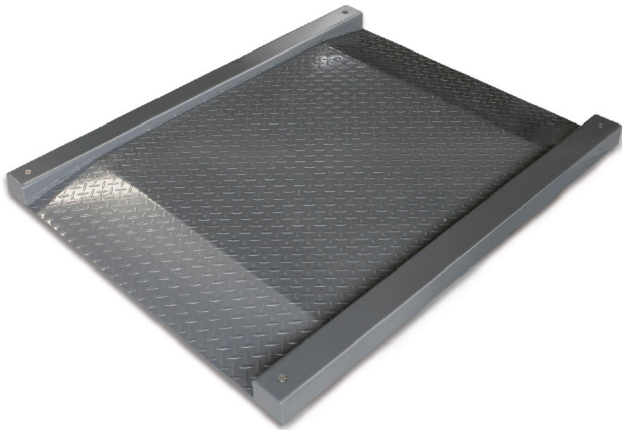


# KERN KFD 600V20M

# KERN

Weighing bridge made of non-slip corrugated steel plate, lacquered



Material platform	steel, powder-coated
Material display housing	Plastics
Material load cell(s)	alloyed steel
Levelling feet adjustable	✓
Stand inclinable	✓
Wall mount	✓
Cable length	5 m
Display device cable length	5 m
Allowed cable length display device [Max]	30 m
Platform Construction	Welded load plate; chequer plate
Load cells - number	4

Functions	
Sum memory function	✓
Underfloor weighing	None
Function for averaging under unstable weighing conditions	✓
IP protection - complete device	IP67 (load cell)
IP protection - platform	IP67
IP protection - load cell	IP67
Auto-off interval(s) in battery mode/rechargeable battery mode	selectable
Auto-off interval(s) in mains power mode	selectable
Tare function	manual (multi)

Power Supply	
Supplied power supply	Power supply unit
Plug-in power supply type	Power adapter
Plug-in power supply / adapter for countries - included with the delivery	EURO
Input voltage power supply / power [Max]	110 V - 230 V AC
Input voltage device / power [Max]	12 V, 500 mA
Rechargeable battery	6 V, 4 Ah
Rechargeable battery operating time - backlight on	8 h
Rechargeable battery operating time - backlight off	35 h
Rechargeable battery charging time	10 h
Rechargeable battery optional	Rchrg. battery optional (factory)

Environmental conditions	
Ambient temperature [Min]	-10 °C

Category	
Brand	KERN
Product category	Component
Product group	Weighing bridge
Product family	KFD-V20-IP67

Measuring System	
Construction type of the scale	Single-range balance
Weighing system	Strain gauge
Weighing capacity [Max]	600 kg
Readability [d]	0,2 kg
Reproducibility	0,2 kg
Linearity	± 0,4 kg
Minimum weight [Min]	4 kg
Tare range	-600 kg
Adjustment options	Adjusting with external weight
Recommended adjusting weight	600 kg (M2)
Stabilization time	2 s
Eccentric loading at 1/3 [Max]	0,4 kg
Loadcell type	ZEMIC H8C 0.5 ton

Display	
Display type	LCD with backlight
Display digit height	52 mm

Construction	
Dimensions weighing surface (W×D)	1000×1000 mm
Dimensions weighing surface	1000×1000 mm
Dimensions weighing platform (W×D×H)	1600×1220×95 mm
Material weighing plate	steel, powder-coated

# KERN KFD 600V20M



Weighing bridge made of non-slip corrugated steel plate, lacquered

Ambient temperature [Max]	40 °C
Humidity of environment [Min]	0 %
Humidity of environment [Max]	80 %

## Approval

CE mark	✓
Conformity assessment possible ex works	✓
Accuracy classe	III
Verification scale interval [e]	0,2 kg

## Services (optional)

Article number for adjustment at the location of installation	961-250
Article number for conformity assessment	965-230
Article number for DAkkS calibration	963-130

## Packing & Shipping

Delivery time	2 d
Dimensions packaging (W×D×H)	1610×1250×360 mm
Shipping method	Freight
Net weight approx.	125 kg
Gross weight approx.	155 kg
Shipping weight	155 kg

## Pictograms

### STANDARD



### FACTORY

