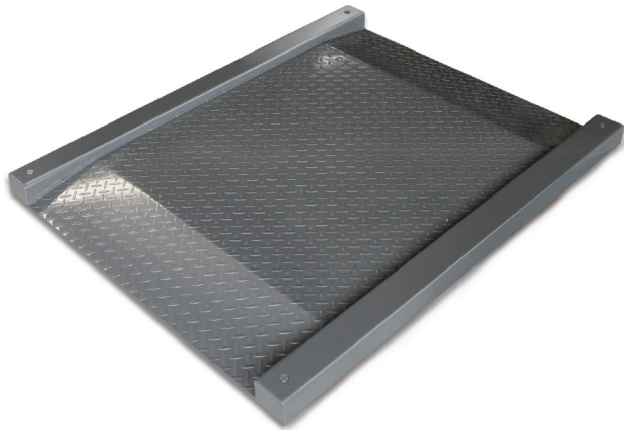


KERN KFD 600V20LM

Weighing bridge made of non-slip corrugated steel plate, lacquered



Approval

Conformity assessment possible ex works	✓
Verification scale interval [e]	200 g

Services (optional)

Article number for conformity assessment	965-230
Article number for DAkkS calibration	963-130

Packing & Shipping

Delivery time	2 d
Dimensions packaging (W×D×H)	1500×1800×350 mm
Shipping method	Freight
Net weight approx.	165 kg
Gross weight approx.	245 kg
Shipping weight	245 kg

Pictograms

STANDARD



FACTORY



Category

Brand	KERN
Product category	Component
Product group	Weighing bridge
Product family	KFD-V20-IP67

Measuring System

Weighing capacity [Max]	600 kg
Readability [d]	200 g
Minimum weight [Min]	4 kg
Loadcell type	ZEMIC H8C 0.5 ton

Construction

Dimensions weighing surface (W×D)	1200×1200 mm
Dimensions weighing surface	1200×1200 mm
Dimensions weighing platform (W×D×H)	1800×1420×95 mm
Material weighing plate	steel, powder-coated
Material platform	steel, powder-coated
Material load cell(s)	alloyed steel
Cable length	5 m
Display device cable length	5 m
Allowed cable length display device [Max]	30 m
Platform Construction	Welded load plate; chequer plate
Load cells - number	4

Functions

IP protection - complete device	IP67 (load cell)
IP protection - platform	IP67
IP protection - load cell	IP67