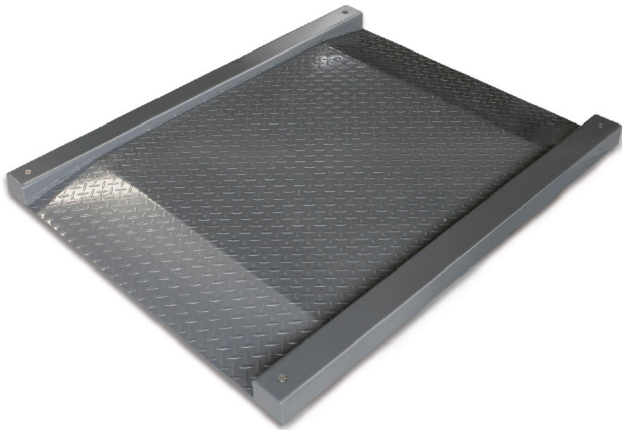


# KERN KFD 1500V20LM

# KERN

Weighing bridge made of non-slip corrugated steel plate, lacquered



## Approval

|   |       |
|---|-------|
| Conformity assessment possible ex works | ✓     |
| Verification scale interval [e]         | 500 g |

## Services (optional)

|  |         |
|--|---------|
| Article number for conformity assessment | 965-230 |
| Article number for DAkkS calibration     | 963-130 |

## Packing & Shipping

|                              |                  |
|------------------------------|------------------|
| Delivery time                | 2 d              |
| Dimensions packaging (W×D×H) | 1850×1510×380 mm |
| Shipping method              | Freight          |
| Net weight approx.           | 165 kg           |
| Gross weight approx.         | 250 kg           |
| Shipping weight              | 247 kg           |

## Pictograms

### STANDARD



### FACTORY



## Category

|                  |                 |
|------------------|-----------------|
| Brand            | KERN            |
| Product category | Component       |
| Product group    | Weighing bridge |
| Product family   | KFD-V20-IP67    |

## Measuring System

|                         |                 |
|-------------------------|-----------------|
| Weighing capacity [Max] | 1500 kg         |
| Readability [d]         | 500 g           |
| Minimum weight [Min]    | 10 kg           |
| Loadcell type           | ZEMIC H8C 1 ton |

## Construction

|   |                                  |
|---|----------------------------------|
| Dimensions weighing surface (W×D)         | 1200×1200 mm                     |
| Dimensions weighing surface               | 1200×1200 mm                     |
| Dimensions weighing platform (W×D×H)      | 1800×1420×95 mm                  |
| Material weighing plate                   | steel, powder-coated             |
| Material platform                         | steel, powder-coated             |
| Material load cell(s)                     | alloyed steel                    |
| Cable length                              | 5 m                              |
| Display device cable length               | 5 m                              |
| Allowed cable length display device [Max] | 30 m                             |
| Platform Construction                     | Welded load plate; chequer plate |
| Load cells - number                       | 4                                |

## Functions

|                                 |                  |
|---------------------------------|------------------|
| IP protection - complete device | IP67 (load cell) |
| IP protection - platform        | IP67             |
| IP protection - load cell       | IP67             |