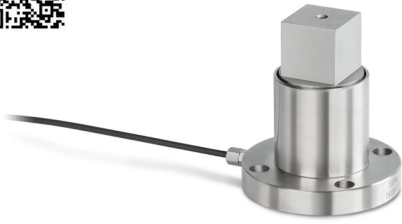




Tip: Analogue torque sensors are compatible with the SAUTER CE HSx display device (rail-mounted module)



DC Y1
Static torque sensor made from alloy steel

Technical data

- High precision (comprehensive Error 0,5 % F.S.)
- RoHS compliant
- For monitoring or measurement of static torques, tests of manual torque wrenches or transfer of static load torques
- Nominal sensitivity: 1,0~1,5 mV/V, depending on nominal load
- Supply voltage max. 10 V DC
- 4-wire connection
- Simple and quick installation
- High torsional stiffness
- Cable length approx. 2 m

DC Y2
Static torque sensor made from alloy steel

Technical data

- High precision (comprehensive Error 0,5 % F.S.)
- RoHS compliant
- Protection against dust and water splashes IP65 (in accordance with EN 60529)
- For monitoring or measurement of static torques, tests of manual torque wrenches or transfer of static load torques
- Nominal sensitivity: 1,5 mV/V
- Supply voltage max. 15 V DC
- 4-wire connection
- High torsional stiffness
- Cable length approx. 2 m

Other designs and nominal loads on request

STANDARD



STANDARD



OPTION



Model Nominal load

SAUTER	Nm
DC 5-Y1	5
DC 10-Y1	10
DC 20-Y1	20
DC 50-Y1	50
DC 100-Y1	100
DC 200-Y1	200
DC 500-Y1	500

Model Nominal load

SAUTER	Nm
DC 200M-Y2	0,2
DC 1-Y2	1
DC 10-Y2	10
DC 20-Y2	20
DC 50-Y2	50

Tip: Further details and technical data sheet as well as an extensive range of accessories can be found at www.sauter.eu