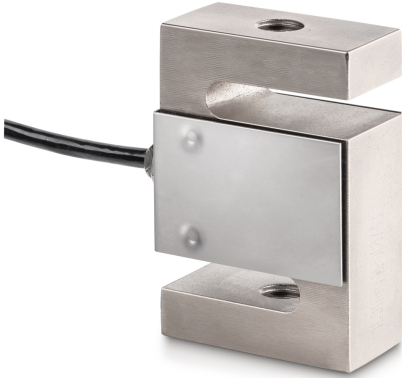


KERN CS 5000-3P1

KERN

4-wire "S" measuring cell made of nickel-plated steel for force and mass measurement



Cable length	6 m
Mounting - force dissipation	Threaded hole M20 × 1,5
Mounting - force application	Threaded hole M20 × 1,5

Functions

IP protection - complete device	IP67
---------------------------------	------

Environmental conditions

Ambient temperature [Min]	-35 °C
Ambient temperature [Max]	65 °C
Use temperature [Min]	-10 °C
Use temperature [Max]	40 °C
Storage temperature [Min]	-40 °C
Storage temperature [Max]	70 °C

Approval

CE mark	✓
---------	---

Services (optional)

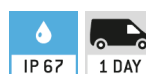
Article number for factory calibration (tensile force)	961-165V
Article number for factory calibration (compressive force)	961-265V
Article number for factory calibration (tensile force/ compressive force)	961-365V

Packing & Shipping

Delivery time	1 d
Dimensions packaging (W×D×H)	205×170×60 mm
Net weight	1,36 kg
Shipping method	Parcel service
Net weight approx.	1,4 kg
Gross weight approx.	1,6 kg
Shipping weight	1,46 kg

Pictograms

STANDARD



OPTION



Category

Brand	Sauter
Product category	Measuring cell
Product group	Load/force measuring cell
Product family	CS P1

Measuring System

Weighing capacity [Max]	5000 kg
Measuring range force [Max] (N)	50 kN
Directions of force	tension compression
Load cell connection	4-wire
Load cell OIML class	C3
Load cell - Resolution (verifiable)	3000 e
Load cell - characteristic value - nominal	2 mV/V
Load cell - Y-value	10000
Load cell - Combined error	0,02%
Load cell - Dead load [Min] (%)	0%
Measuring applications	force mass
Load cell - Input resistance - nominal	350 Ω
Load cell - Output resistance - nominal	351 Ω
Load cell - Isolation resistance - [Min]	500 MΩ

Construction

Design	"S" shaped cell
Dimension (W×D×H)	76,2×101,6×27,2 mm
Material	steel, nickel-plated