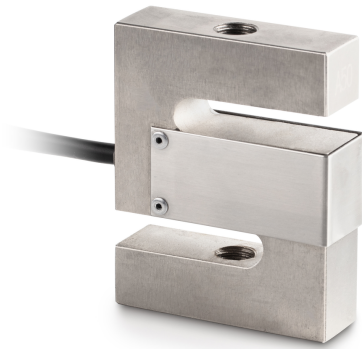


SAUTER CS 500-3Q1

KERN

6-wire "S" measuring cell made of nickel-plated steel for force and mass measurement



Load cell - Recommended excitation voltage [Max]	15 V
Load cell - Input resistance - variance	20 Ω
Load cell - Output resistance - variance	3 Ω

Construction	
Design	"S" shaped cell
Dimension (W×D×H)	80×62,1×19 mm
Material	steel, nickel-plated
Cable length	5 m
Mounting - force dissipation	Threaded hole M12
Mounting - force application	Threaded hole M12

Functions	
IP protection - complete device	IP67

Environmental conditions	
Ambient temperature [Min]	-10 °C
Ambient temperature [Max]	40 °C
Storage temperature [Min]	-30 °C
Storage temperature [Max]	70 °C

Approval	
CE mark	✓

Services (optional)	
Article number for DAkkS calibration (tensile force)	963-163V
Article number for DAkkS calibration (compressive force)	963-263V
Article number for DAkkS calibration (tensile force/ compressive force)	963-363V

Packing & Shipping	
Delivery time	1 d
Dimensions packaging (W×D×H)	250×155×60 mm
Shipping method	Parcel service
Net weight approx.	0,80 kg
Gross weight approx.	0,95 kg
Shipping weight	0,921 kg

Category	
Brand	Sauter
Product category	Measuring cell
Product group	Load/force measuring cell
Product family	CS Q1

Measuring System	
Weighing capacity [Max]	500 kg
Measuring range force [Max] (N)	5 kN
Directions of force	tension compression
Load cell connection	6-wire
Load cell OIML class	C3
Load cell - Resolution (verifiable)	3000 e
Load cell - characteristic value - nominal	2 mV/V
Load cell - characteristic value - variance	0,002 mV/V
Load cell - Y-value	10000
Load cell - Combined error	0,017%
Load cell - Dead load [Min] (%)	0%
Measuring applications	force mass
Load cell - Input resistance - nominal	400 Ω
Load cell - Output resistance - nominal	350 Ω
Load cell - Isolation resistance - [Min]	5000 M Ω
Load cell - Recommended excitation voltage [Min]	10 V

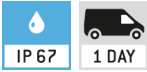
SAUTER CS 500-3Q1



6-wire "S" measuring cell made of nickel-plated steel for force and mass measurement

Pictograms

STANDARD



OPTION

