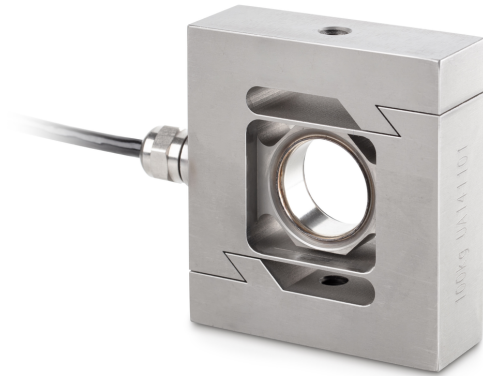


SAUTER CS 50-3P2

KERN

"S"-Load/force measuring cell made from stainless steel



Cable length	6 m
Mounting - force dissipation	Threaded hole M8
Mounting - force application	Threaded hole M8

Functions

IP protection - complete device	IP68
---------------------------------	------

Environmental conditions

Ambient temperature [Min]	-35 °C
Ambient temperature [Max]	65 °C
Use temperature [Min]	-10 °C
Use temperature [Max]	40 °C
Storage temperature [Min]	-40 °C
Storage temperature [Max]	70 °C

Approval

CE mark	✓
---------	---

Services (optional)

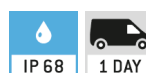
Article number for DAkkS calibration (tensile force)	963-161V
Article number for DAkkS calibration (compressive force)	963-261V
Article number for DAkkS calibration (tensile force/ compressive force)	963-361V

Packing & Shipping

Delivery time	1 d
Dimensions packaging (W×D×H)	205×170×60 mm
Shipping method	Parcel service
Net weight approx.	1,4 kg
Gross weight approx.	1,6 kg
Shipping weight	1,46 kg

Pictograms

STANDARD



OPTION



Category

Brand	Sauter
Product category	Measuring cell
Product group	Load/force measuring cell
Product family	CS P2

Measuring System

Weighing capacity [Max]	50 kg
Measuring range force [Max] (N)	500 N
Directions of force	tension compression
Load cell connection	4-wire
Load cell OIML class	C3
Load cell - Resolution (verifiable)	3000 e
Load cell - characteristic value - nominal	2 mV/V
Load cell - Y-value	12000
Load cell - Combined error	0,023%
Load cell - Dead load [Min] (%)	0%
Measuring applications	force mass
Load cell - Input resistance - nominal	350 Ω
Load cell - Output resistance - nominal	355 Ω
Load cell - Isolation resistance - [Min]	5000 MΩ

Construction

Design	"S" shaped cell
Dimension (W×D×H)	92×86×50 mm
Material	stainless steel