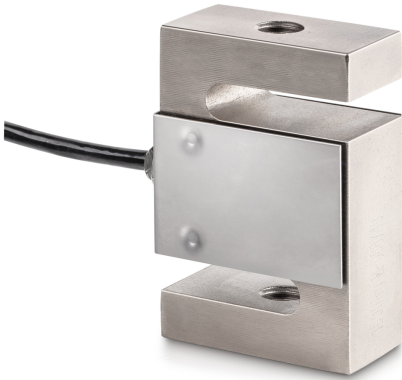


KERN CS 50-3P1

4-wire "S" measuring cell made of nickel-plated steel for force and mass measurement



Construction

Design	"S" shaped cell
Dimension (W×D×H)	50,8×76,2×14,5 mm
Material	steel, nickel-plated
Cable length	3 m
Mounting - force dissipation	Threaded hole M8
Mounting - force application	Threaded hole M8

Functions

IP protection - complete device	IP67
---------------------------------	------

Approval

CE mark	✓
---------	---

Services (optional)

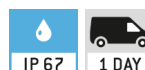
Article number for DAkkS calibration (tensile force)	963-161V
Article number for DAkkS calibration (compressive force)	963-261V
Article number for DAkkS calibration (tensile force/ compressive force)	963-361V

Packing & Shipping

Delivery time	1 d
Dimensions packaging (W×D×H)	185×155×60 mm
Net weight	0,58 kg
Shipping method	Parcel service
Net weight approx.	0,60 kg
Gross weight approx.	0,70 kg
Shipping weight	0,685 kg

Pictograms

STANDARD



OPTION



Category

Brand	Sauter
Product category	Measuring cell
Product group	Load/force measuring cell
Product family	CS P1

Measuring System

Weighing capacity [Max]	50 kg
Measuring range force [Max] (N)	500 N
Directions of force	tension compression
Load cell connection	4-wire
Load cell OIML class	C3
Load cell - Resolution (verifiable)	3000 e
Load cell - characteristic value - nominal	2 mV/V
Load cell - Y-value	10000
Load cell - Combined error	0,02%
Load cell - Dead load [Min] (%)	0%
Measuring applications	force mass
Load cell - Input resistance - nominal	350 Ω
Load cell - Output resistance - nominal	351 Ω
Load cell - Isolation resistance - [Min]	500 MΩ
Load cell - Recommended excitation voltage [Min]	5 V
Load cell - Recommended excitation voltage [Max]	12 V