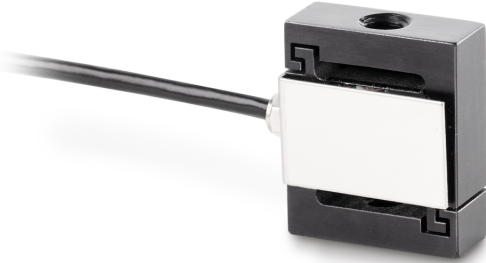


SAUTER CS 5-Y1

KERN

Miniature "S"-load/force measuring cell made of stainless steel



Cable length	2 m
Mounting - force dissipation	Threaded hole M4
Mounting - force application	Threaded hole M4

Functions	
IP protection - complete device	IP65

Environmental conditions	
Use temperature [Min]	-30 °C
Use temperature [Max]	70 °C

Approval	
CE mark	✓

Services (optional)	
Article number for DAkkS calibration (tensile force)	963-161V
Article number for DAkkS calibration (compressive force)	963-261V
Article number for DAkkS calibration (tensile force/ compressive force)	963-361V

Packing & Shipping	
Delivery time	1 d
Dimensions packaging (W×D×H)	150×105×40 mm
Shipping method	Parcel service
Net weight approx.	0,05 kg
Gross weight approx.	0,10 kg
Shipping weight	0,1 kg

Pictograms

STANDARD



OPTION



Category	
Brand	Sauter
Product category	Measuring cell
Product group	Load/force measuring cell
Product family	CS Y1

Measuring System	
Weighing capacity [Max]	5 kg
Measuring range force [Max] (N)	50 N
Directions of force	tension compression
Load cell connection	4-wire
Load cell - characteristic value - nominal	2 mV/V
Load cell - Combined error	0,05%
Measuring applications	force mass
Load cell - Input resistance - nominal	385 Ω
Load cell - Output resistance - nominal	350 Ω
Load cell - Isolation resistance - [Min]	2000 MΩ
Load cell - Recommended excitation voltage [Min]	5 V
Load cell - Recommended excitation voltage [Max]	10 V
Load cell - Input resistance - variance	3 Ω
Load cell - Output resistance - variance	3 Ω

Construction	
Design	"S" shaped cell
Material	stainless steel