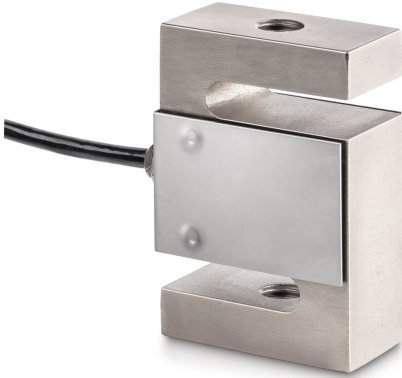


KERN CS 250-3P1

KERN

4-wire "S" measuring cell made of nickel-plated steel for force and mass measurement



| | |
|------------------------------|-------------------|
| Mounting - force dissipation | Threaded hole M12 |
| Mounting - force application | Threaded hole M12 |

Functions

| | |
|---------------------------------|------|
| IP protection - complete device | IP67 |
|---------------------------------|------|

Environmental conditions

| | |
|---------------------------|--------|
| Ambient temperature [Min] | -35 °C |
| Ambient temperature [Max] | 65 °C |
| Use temperature [Min] | -10 °C |
| Use temperature [Max] | 40 °C |
| Storage temperature [Min] | -40 °C |
| Storage temperature [Max] | 70 °C |

Approval

| | |
|---------|---|
| CE mark | ✓ |
|---------|---|

Services (optional)

| | |
|-------------------------------------------------------------------------|----------|
| Article number for DAkkS calibration (tensile force) | 963-163V |
| Article number for DAkkS calibration (compressive force) | 963-263V |
| Article number for DAkkS calibration (tensile force/ compressive force) | 963-363V |

Packing & Shipping

| | |
|------------------------------|----------------|
| Delivery time | 1 d |
| Dimensions packaging (W×D×H) | 185×155×60 mm |
| Net weight | 0,512 kg |
| Shipping method | Parcel service |
| Net weight approx. | 0,55 kg |
| Gross weight approx. | 0,65 kg |
| Shipping weight | 0,61 kg |

Pictograms

STANDARD



OPTION



Category

| | |
|------------------|---------------------------|
| Brand | Sauter |
| Product category | Measuring cell |
| Product group | Load/force measuring cell |
| Product family | CS P1 |

Measuring System

| | |
|--------------------------------------------|------------------------|
| Weighing capacity [Max] | 250 kg |
| Measuring range force [Max] (N) | 2,5 kN |
| Directions of force | tension compression |
| Load cell connection | 4-wire |
| Load cell OIML class | C3 |
| Load cell - Resolution (verifiable) | 3000 e |
| Load cell - characteristic value - nominal | 2 mV/V |
| Load cell - Y-value | 10000 |
| Load cell - Combined error | 0,02% |
| Measuring applications | force mass |
| Load cell - Input resistance - nominal | 350 Ω |
| Load cell - Isolation resistance - [Min] | 500 MΩ |
| Load cell - Input resistance - variance | 351 Ω |

Construction

| | |
|-------------------|----------------------|
| Design | "S" shaped cell |
| Dimension (W×D×H) | 50,8×76,2×20,8 mm |
| Material | steel, nickel-plated |
| Cable length | 3 m |