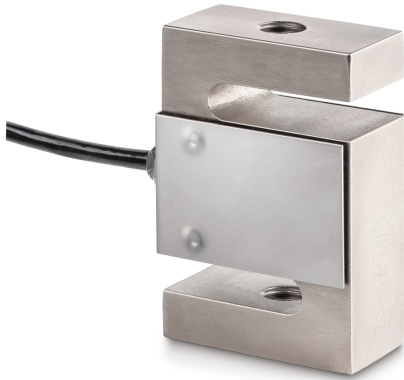


KERN CS 15000-3P1

KERN

4-wire "S" measuring cell made of nickel-plated steel for force and mass measurement



Load cell - Recommended excitation voltage [Max]	12 V
Load cell - Input resistance - variance	3,5 Ω
Load cell - Output resistance - variance	2 Ω

Construction

Design	"S" shaped cell
Dimension (W×D×H)	160×200×60 mm
Material	steel, nickel-plated
Cable length	6 m
Mounting - force dissipation	Threaded hole M42 × 3
Mounting - force application	Threaded hole M42 × 3

Functions

IP protection - complete device	IP67
---------------------------------	------

Environmental conditions

Ambient temperature [Min]	-35 °C
Ambient temperature [Max]	65 °C
Use temperature [Min]	-10 °C
Use temperature [Max]	40 °C
Storage temperature [Min]	-40 °C
Storage temperature [Max]	70 °C

Approval

CE mark	✓
---------	---

Packing & Shipping

Delivery time	4 d
Dimensions packaging (W×D×H)	320×320×160 mm
Net weight	11,9 kg
Shipping method	Parcel service
Net weight approx.	12 kg
Gross weight approx.	14 kg
Shipping weight	13,3 kg

Pictograms

STANDARD



Category

Brand	Sauter
Product category	Measuring cell
Product group	Load/force measuring cell
Product family	CS P1

Measuring System

Weighing capacity [Max]	15000 kg
Measuring range force [Max] (N)	150 kN
Directions of force	tension compression
Load cell connection	4-wire
Load cell OIML class	C3
Load cell - Resolution (verifiable)	3000 e
Load cell - characteristic value - nominal	2 mV/V
Load cell - characteristic value - variance	0,004 mV/V
Load cell - Y-value	10000
Load cell - Combined error	0,02%
Load cell - Dead load [Min] (%)	0%
Measuring applications	force mass
Load cell - Input resistance - nominal	350 Ω
Load cell - Output resistance - nominal	351 Ω
Load cell - Isolation resistance - [Min]	500 MΩ
Load cell - Recommended excitation voltage [Min]	5 V