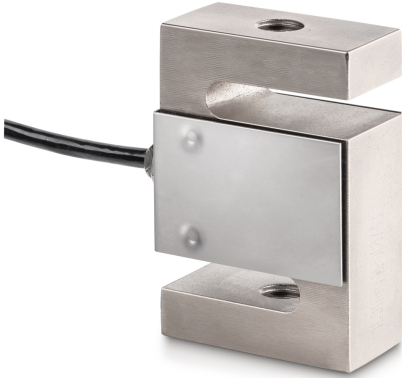


# KERN CS 150-3P1

**KERN**

4-wire "S" measuring cell made of nickel-plated steel for force and mass measurement



Load cell - Input resistance - variance 3,5  $\Omega$

Load cell - Output resistance - variance 2  $\Omega$

## Construction

Design "S" shaped cell  
Dimension (W×D×H) 50,8×76,2×20,8 mm  
Material steel, nickel-plated  
Cable length 3 m  
Mounting - force dissipation Threaded hole M10  
Mounting - force application Threaded hole M10

## Functions

IP protection - complete device IP67

## Environmental conditions

Ambient temperature [Min] -35 °C  
Ambient temperature [Max] 65 °C  
Use temperature [Min] -10 °C  
Use temperature [Max] 40 °C  
Storage temperature [Min] -40 °C  
Storage temperature [Max] 70 °C

## Approval

CE mark ✓

## Services (optional)

Article number for DAkkS calibration (tensile force) 963-162V  
Article number for DAkkS calibration (compressive force) 963-262V  
Article number for DAkkS calibration (tensile force/ compressive force) 963-362V

## Packing & Shipping

Delivery time 1 d  
Dimensions packaging (W×D×H) 185×155×60 mm  
Net weight 0,518 kg  
Shipping method Parcel service  
Net weight approx. 0,55 kg  
Gross weight approx. 0,65 kg  
Shipping weight 0,615 kg

## Category

Brand Sauter  
Product category Measuring cell  
Product group Load/force measuring cell  
Product family CS P1

## Measuring System

Weighing capacity [Max] 150 kg  
Measuring range force [Max] (N) 1,5 kN  
Directions of force tension  
compression  
Load cell connection 4-wire  
Load cell OIML class C3  
Load cell - Resolution (verifiable) 3000 e  
Load cell - characteristic value - nominal 2 mV/V  
Load cell - characteristic value - variance 0,004 mV/V  
Load cell - Y-value 10000  
Load cell - Combined error 0,02%  
Measuring applications force  
mass  
Load cell - Input resistance - nominal 350  $\Omega$   
Load cell - Output resistance - nominal 351  $\Omega$   
Load cell - Isolation resistance - [Min] 500 M $\Omega$   
Load cell - Recommended excitation voltage [Min] 5 V  
Load cell - Recommended excitation voltage [Max] 12 V

# KERN CS 150-3P1



4-wire "S" measuring cell made of nickel-plated steel for force and mass measurement

## Pictograms

### STANDARD

---



### OPTION

---

