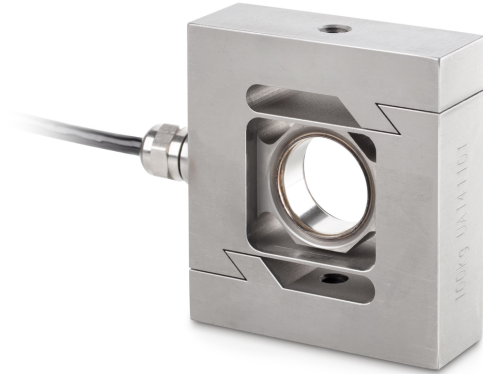


# SAUTER CS 100-3P2

"S"-Load/force measuring cell made from stainless steel



Cable length	6 m
Mounting - force dissipation	Threaded hole M8
Mounting - force application	Threaded hole M8

## Functions

IP protection - complete device	IP68
---------------------------------	------

## Environmental conditions

Ambient temperature [Min]	-35 °C
Ambient temperature [Max]	65 °C
Use temperature [Min]	-10 °C
Use temperature [Max]	40 °C
Storage temperature [Min]	-40 °C
Storage temperature [Max]	70 °C

## Approval

CE mark	✓
---------	---

## Services (optional)

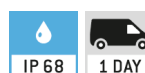
Article number for DAkkS calibration (tensile force)	963-162V
Article number for DAkkS calibration (compressive force)	963-262V
Article number for DAkkS calibration (tensile force/ compressive force)	963-362V

## Packing & Shipping

Delivery time	1 d
Dimensions packaging (W×D×H)	205×170×60 mm
Shipping method	Parcel service
Net weight approx.	1,4 kg
Gross weight approx.	1,6 kg
Shipping weight	1,46 kg

## Pictograms

### STANDARD



### OPTION



## Category

Brand	Sauter
Product category	Measuring cell
Product group	Load/force measuring cell
Product family	CS P2

## Measuring System

Weighing capacity [Max]	100 kg
Measuring range force [Max] (N)	1 kN
Directions of force	tension compression
Load cell connection	4-wire
Load cell OIML class	C3
Load cell - Resolution (verifiable)	3000 e
Load cell - characteristic value - nominal	2 mV/V
Load cell - Y-value	12000
Load cell - Combined error	0,023%
Load cell - Dead load [Min] (%)	0%
Measuring applications	force mass
Load cell - Input resistance - nominal	350 Ω
Load cell - Output resistance - nominal	355 Ω
Load cell - Isolation resistance - [Min]	5000 MΩ

## Construction

Design	"S" shaped cell
Dimension (W×D×H)	92×86×50 mm
Material	stainless steel