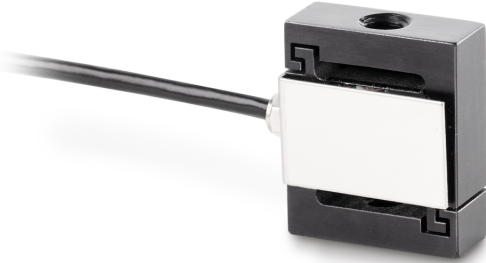


# SAUTER CS 1-Y1

# KERN

Miniature "S"-load/force measuring cell made of stainless steel



Cable length	2 m
Mounting - force dissipation	Threaded hole M3
Mounting - force application	Threaded hole M3

Functions	
IP protection - complete device	IP65

Environmental conditions	
Use temperature [Min]	-30 °C
Use temperature [Max]	70 °C

Approval	
CE mark	✓

Services (optional)	
Article number for DAkkS calibration (tensile force)	963-161V
Article number for DAkkS calibration (compressive force)	963-261V
Article number for DAkkS calibration (tensile force/ compressive force)	963-361V

Packing & Shipping	
Delivery time	1 d
Dimensions packaging (W×D×H)	150×105×40 mm
Shipping method	Parcel service
Net weight approx.	0,05 kg
Gross weight approx.	0,10 kg
Shipping weight	0,1 kg

## Pictograms

### STANDARD



### OPTION



Category	
Brand	Sauter
Product category	Measuring cell
Product group	Load/force measuring cell
Product family	CS Y1

Measuring System	
Weighing capacity [Max]	1 kg
Measuring range force [Max] (N)	10 N
Directions of force	tension compression
Load cell connection	4-wire
Load cell - characteristic value - nominal	2 mV/V
Load cell - Combined error	0,05%
Measuring applications	force mass
Load cell - Input resistance - nominal	385 Ω
Load cell - Output resistance - nominal	350 Ω
Load cell - Isolation resistance - [Min]	2000 MΩ
Load cell - Recommended excitation voltage [Min]	5 V
Load cell - Recommended excitation voltage [Max]	10 V
Load cell - Input resistance - variance	3 Ω
Load cell - Output resistance - variance	3 Ω

Construction	
Design	"S" shaped cell
Material	stainless steel