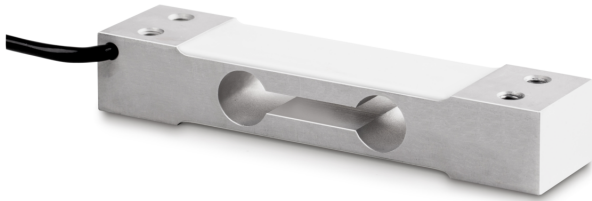


SAUTER CP 8-3P1

KERN

Single-point load cell made of anodised aluminium



Category

Brand	Sauter
Product category	Measuring cell
Product group	Load cell
Product family	CP P1

Measuring System

Weighing capacity [Max]	8 kg
Power supply + Colour	red
Power supply - Colour	black
Load cell - characteristic value - variance	0,2 mV/V
Load cell - Y-value	10000
Load cell - Combined error	0,023%
Load cell - Isolation resistance - [Min]	5000 M Ω
Load cell - Dead load [Min] (%)	0%
Load cell - Recommended excitation voltage [Min]	5 V
Load cell - Input resistance - nominal	409 Ω
Load cell - Output resistance - nominal	350 Ω
Measuring applications	mass
Load cell - characteristic value - nominal	2 mV/V
Safe overload	150%FS
Creep error (30 minutes)	$\leq \pm 0.0167\%FS$
Temperature coefficient - zero signal	$\leq \pm 0.02\%FS/10\text{ }^{\circ}C$

Functions

IP protection - complete device	IP65
---------------------------------	------

Construction

Material	aluminium
Design	Singlepoint load cell

Dimension (WxDxH)	130x30x22 mm
Maximum platform size	250x350 mm
Cable length	0,4 m
Mounting - force application	2 x threaded hole M6
Mounting - force dissipation	2 x threaded hole M6

Environmental conditions

Ambient temperature [Min]	-35 $^{\circ}C$
Ambient temperature [Max]	65 $^{\circ}C$
Use temperature [Min]	-10 $^{\circ}C$
Use temperature [Max]	40 $^{\circ}C$
Storage temperature [Min]	-40 $^{\circ}C$
Storage temperature [Max]	70 $^{\circ}C$

Approval

CE mark	✓
---------	---

Product information

GTIN/EAN number	4045761221154
Trade number	84239010
REACH classification	no prohibited substances

Packing & Shipping

Shipping method	Parcel service
Delivery time	1 d
Dimensions packaging (WxDxH)	160x95x45 mm
Net weight approx.	0,20 kg
Gross weight approx.	0,25 kg
Shipping weight	0,209 kg

Pictograms

STANDARD



OPTION

