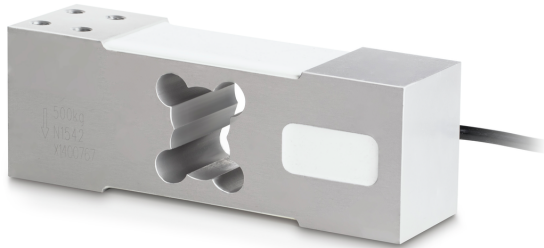


SAUTER CP 600-3P8

KERN

Single-point load cell made of aluminium



| | |
|--------------------------|-----------------------|
| Creep error (30 minutes) | $\leq \pm 0.0167\%FS$ |
| Safe overload | 120% |
| Ultimate overload | 150% |
| Zero balance | $\leq \pm 2.0\%FS$ |

Construction

| | |
|------------------------------|-----------------------|
| Design | Singlepoint load cell |
| Material | aluminium |
| Cable length | 3 m |
| Mounting - force dissipation | 4 × threaded hole M8 |
| Mounting - force application | 4 × threaded hole M8 |
| Maximum platform size | 600×600 mm |

Functions

| | |
|---------------------------------|------|
| IP protection - complete device | IP65 |
|---------------------------------|------|

Environmental conditions

| | |
|---------------------------|--------|
| Ambient temperature [Min] | -35 °C |
| Ambient temperature [Max] | 65 °C |
| Use temperature [Min] | -10 °C |
| Use temperature [Max] | 40 °C |

Approval

| | |
|---------|---|
| CE mark | ✓ |
|---------|---|

Packing & Shipping

| | |
|------------------------------|----------------|
| Delivery time | 1 d |
| Dimensions packaging (W×D×H) | 180×110×75 mm |
| Shipping method | Parcel service |
| Net weight approx. | 1,8 kg |
| Gross weight approx. | 1,8 kg |
| Shipping weight | 1,75 kg |

Pictograms

STANDARD



Category

| | |
|------------------|----------------|
| Brand | Sauter |
| Product category | Measuring cell |
| Product group | Load cell |
| Product family | CP P8 |

Measuring System

| | |
|--|------------------------------------|
| Weighing capacity [Max] | 600 kg |
| Directions of force | compression |
| Load cell connection | 6-wire |
| Load cell OIML class | C3 |
| Load cell - Resolution (verifiable) | 3000 e |
| Load cell - characteristic value - nominal | 2 mV/V |
| Load cell - characteristic value - variance | 0,2 mV/V |
| Load cell - Y-value | 10000 |
| Load cell - Combined error | 0,02% |
| Measuring applications | mass |
| Load cell - Input resistance - nominal | 409 Ω |
| Load cell - Output resistance - nominal | 350 Ω |
| Load cell - Isolation resistance - [Min] | 5000 MΩ |
| Load cell - Recommended excitation voltage [Min] | 5 V |
| Load cell - Recommended excitation voltage [Max] | 12 V |
| Load cell - Input resistance - variance | 6 Ω |
| Load cell - Output resistance - variance | 3 Ω |
| Temperature coefficient - characteristic value | $\leq \pm 0.020\%FS/10\text{ °C}$ |
| Temperature coefficient - zero signal | $\leq \pm 0.0175\%FS/10\text{ °C}$ |