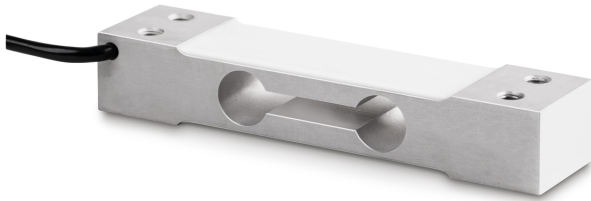


# SAUTER CP 35-3P1

**KERN**

Single-point load cell made of anodised aluminium



## Category

Brand	Sauter
Product category	Measuring cell
Product group	Load cell
Product family	CP P1

## Measuring System

Weighing capacity [Max]	35 kg
Directions of force	compression
Load cell connection	4-wire
Load cell OIML class	C3
Load cell - Resolution (verifiable)	3000 e
Load cell - characteristic value - nominal	2 mV/V
Load cell - characteristic value - variance	0,2 mV/V
Load cell - Y-value	10000
Load cell - Combined error	0,023%
Load cell - Dead load [Min] (%)	0%
Measuring applications	mass
Load cell - Input resistance - nominal	409 $\Omega$
Load cell - Output resistance - nominal	350 $\Omega$
Load cell - Isolation resistance - [Min]	5000 M $\Omega$
Load cell - Recommended excitation voltage [Min]	5 V
Load cell - Recommended excitation voltage [Max]	12 V
Load cell - Input resistance - variance	6 $\Omega$
Load cell - Output resistance - variance	3 $\Omega$
Temperature coefficient - characteristic value	$\leq \pm 0.0175\%FS/10\text{ }^{\circ}C$
Temperature coefficient - zero signal	$\leq \pm 0.02\%FS/10\text{ }^{\circ}C$

Creep error (30 minutes)	$\leq \pm 0.0167\%FS$
Safe overload	150%FS
Ultimate overload	300%FS
Zero balance	$\leq \pm 2.0\%FS$

## Construction

Design	Singlepoint load cell
Dimension (WxDxH)	130x30x22 mm
Material	aluminium
Cable length	0,4 m
Mounting - force dissipation	2 x threaded hole M6
Mounting - force application	2 x threaded hole M6
Maximum platform size	250x350 mm

## Functions

IP protection - complete device	IP65
---------------------------------	------

## Environmental conditions

Ambient temperature [Min]	-35 $^{\circ}C$
Ambient temperature [Max]	65 $^{\circ}C$
Use temperature [Min]	-10 $^{\circ}C$
Use temperature [Max]	40 $^{\circ}C$
Storage temperature [Min]	-40 $^{\circ}C$
Storage temperature [Max]	70 $^{\circ}C$

## Approval

CE mark	✓
---------	---

## Services (optional)

Article number for DAkKS calibration (compressive force)	963-261V
----------------------------------------------------------	----------

## Packing & Shipping

Delivery time	1 d
Dimensions packaging (WxDxH)	165x100x45 mm
Shipping method	Parcel service
Net weight approx.	0,20 kg
Gross weight approx.	0,25 kg
Shipping weight	0,228 kg

# SAUTER CP 35-3P1

Single-point load cell made of anodised aluminium



## Pictograms

### STANDARD

---



### OPTION

---

