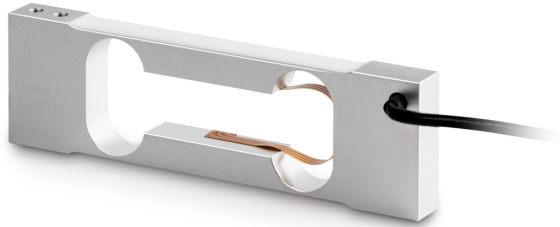


SAUTER CP 300-0P4

KERN

Single-point load cell made of anodised aluminium



Construction

| | |
|------------------------------|-----------------------|
| Design | Singlepoint load cell |
| Dimension (W×D×H) | 110×33×10 mm |
| Material | aluminium |
| Cable length | 0,4 m |
| Mounting - force dissipation | 2 × threaded hole M3 |
| Mounting - force application | 2 × threaded hole M3 |
| Maximum platform size | 200×200 mm |

Functions

| | |
|---------------------------------|------|
| IP protection - complete device | IP65 |
|---------------------------------|------|

Environmental conditions

| | |
|---------------------------|--------|
| Ambient temperature [Min] | -20 °C |
| Ambient temperature [Max] | 50 °C |
| Use temperature [Min] | -10 °C |
| Use temperature [Max] | 40 °C |
| Storage temperature [Min] | -30 °C |
| Storage temperature [Max] | 60 °C |

Approval

| | |
|---------|---|
| CE mark | ✓ |
|---------|---|

Services (optional)

| | |
|--|----------|
| Article number for DAkkS calibration (compressive force) | 963-261V |
|--|----------|

Packing & Shipping

| | |
|------------------------------|----------------|
| Delivery time | 1 d |
| Dimensions packaging (W×D×H) | 120×50×35 mm |
| Shipping method | Parcel service |
| Net weight approx. | 0,10 kg |
| Gross weight approx. | 0,10 kg |
| Shipping weight | 0,1 kg |

Pictograms

STANDARD



OPTION



Category

| | |
|------------------|----------------|
| Brand | Sauter |
| Product category | Measuring cell |
| Product group | Load cell |
| Product family | CP P4 |

Measuring System

| | |
|--|-------------|
| Weighing capacity [Max] | 300 g |
| Directions of force | compression |
| Load cell connection | 4-wire |
| Load cell OIML class | C3 |
| Load cell - Resolution (verifiable) | 3000 e |
| Load cell - characteristic value - nominal | 0,9 mV/V |
| Load cell - characteristic value - variance | 0,1 mV/V |
| Load cell - Y-value | 4667 |
| Load cell - Combined error | 0,023% |
| Load cell - Dead load [Min] (%) | 0% |
| Measuring applications | mass |
| Load cell - Input resistance - nominal | 406 Ω |
| Load cell - Output resistance - nominal | 350 Ω |
| Load cell - Isolation resistance - [Min] | 5000 MΩ |
| Load cell - Recommended excitation voltage [Min] | 5 V |
| Load cell - Recommended excitation voltage [Max] | 12 V |
| Load cell - Input resistance - variance | 6 Ω |
| Load cell - Output resistance - variance | 3 Ω |