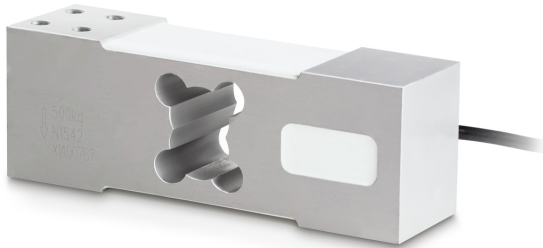


SAUTER CP 250-3P8

KERN

Single-point load cell made of aluminium



Creep error (30 minutes)	$\leq \pm 0.0167\%FS$
Safe overload	120%
Ultimate overload	150%
Zero balance	$\leq \pm 2.0\%FS$

Construction

Design	Singlepoint load cell
Material	aluminium
Cable length	3 m
Mounting - force dissipation	4 × threaded hole M8
Mounting - force application	4 × threaded hole M8
Maximum platform size	600×600 mm

Functions

IP protection - complete device	IP65
---------------------------------	------

Environmental conditions

Ambient temperature [Min]	-35 °C
Ambient temperature [Max]	65 °C
Use temperature [Min]	-10 °C
Use temperature [Max]	40 °C

Approval

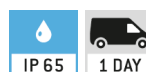
CE mark	✓
---------	---

Packing & Shipping

Delivery time	1 d
Dimensions packaging (W×D×H)	180×110×75 mm
Shipping method	Parcel service
Net weight approx.	1,8 kg
Gross weight approx.	1,8 kg
Shipping weight	1,75 kg

Pictograms

STANDARD



Category

Brand	Sauter
Product category	Measuring cell
Product group	Load cell
Product family	CP P8

Measuring System

Weighing capacity [Max]	250 kg
Directions of force	compression
Load cell connection	6-wire
Load cell OIML class	C3
Load cell - Resolution (verifiable)	3000 e
Load cell - characteristic value - nominal	2 mV/V
Load cell - characteristic value - variance	0,2 mV/V
Load cell - Y-value	10000
Load cell - Combined error	0,02%
Measuring applications	mass
Load cell - Input resistance - nominal	409 Ω
Load cell - Output resistance - nominal	350 Ω
Load cell - Isolation resistance - [Min]	5000 MΩ
Load cell - Recommended excitation voltage [Min]	5 V
Load cell - Recommended excitation voltage [Max]	12 V
Load cell - Input resistance - variance	6 Ω
Load cell - Output resistance - variance	3 Ω
Temperature coefficient - characteristic value	$\leq \pm 0.020\%FS/10\text{ °C}$
Temperature coefficient - zero signal	$\leq \pm 0.0175\%FS/10\text{ °C}$