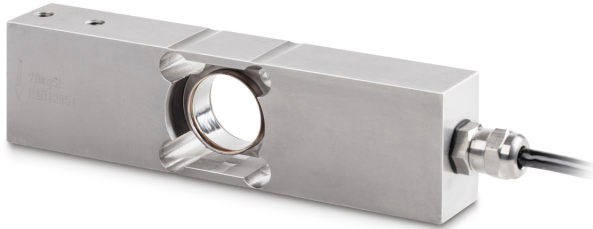


SAUTER CP 10-3P9

KERN

Single-point load cell made from stainless steel



Dimension (W×D×H)	150×40×25 mm
Material	stainless steel
Cable length	3 m
Mounting - force dissipation	Threaded hole M6
Mounting - force application	Threaded hole M6
Maximum platform size	400×400 mm

Functions

IP protection - complete device	IP68 IP69K
---------------------------------	---------------

Environmental conditions

Ambient temperature [Min]	-35 °C
Ambient temperature [Max]	65 °C
Use temperature [Min]	-10 °C
Use temperature [Max]	40 °C
Storage temperature [Min]	-40 °C
Storage temperature [Max]	70 °C

Approval

CE mark	✓
---------	---

Services (optional)

Article number for DAkkS calibration (compressive force)	963-261V
--	----------

Packing & Shipping

Delivery time	1 d
Dimensions packaging (W×D×H)	230×115×45 mm
Shipping method	Parcel service
Net weight approx.	1,00 kg
Gross weight approx.	1,2 kg
Shipping weight	1,065 kg

Pictograms

STANDARD



OPTION



Category

Brand	Sauter
Product category	Measuring cell
Product group	Load cell
Product family	CP P9

Measuring System

Weighing capacity [Max]	10 kg
Directions of force	compression
Load cell connection	6-wire
Load cell OIML class	C3
Load cell - Resolution (verifiable)	3000 e
Load cell - characteristic value - nominal	2 mV/V
Load cell - characteristic value - variance	0,2 mV/V
Load cell - Y-value	10000
Load cell - Combined error	0,023%
Load cell - Dead load [Min] (%)	0%
Measuring applications	mass
Load cell - Input resistance - nominal	380 Ω
Load cell - Output resistance - nominal	350 Ω
Load cell - Isolation resistance - [Min]	5000 MΩ
Load cell - Recommended excitation voltage [Min]	5 V
Load cell - Recommended excitation voltage [Max]	12 V
Load cell - Input resistance - variance	15 Ω
Load cell - Output resistance - variance	10 Ω

Construction

Design	Singlepoint load cell
--------	-----------------------