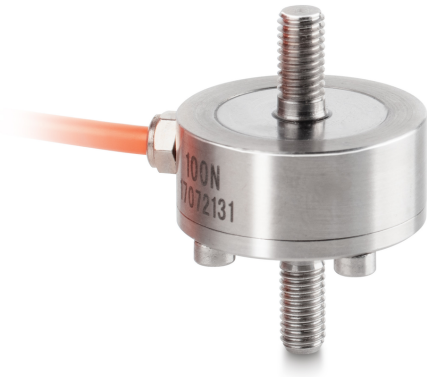


SAUTER CO 500-Y2

KERN

Miniature cylindrical load cell made from stainless steel



Category

Brand	Sauter
Product category	Measuring cell
Product group	Load/force measuring cell
Product family	CO Y2

Measuring System

Weighing capacity [Max]	500 kg
Measuring range force [Max] (N)	5 kN
Directions of force	tension compression
Load cell connection	4-wire
Load cell OIML class	G5
Load cell - characteristic value - nominal	1,5 mV/V
Load cell - Combined error	0,5%
Measuring applications	force mass
Load cell - Input resistance - nominal	350 Ω
Load cell - Output resistance - nominal	350 Ω
Load cell - Isolation resistance - [Min]	5000 MΩ
Load cell - Recommended excitation voltage [Min]	9 V
Load cell - Recommended excitation voltage [Max]	12 V
Load cell - Input resistance - variance	20 Ω
Load cell - Output resistance - variance	3 Ω

Construction

Design	Tension-/compression rod
Dimension (Ø×H)	51×70 mm
Material	stainless steel
Cable length	2 m
Mounting - force dissipation	External thread M12
Mounting - force application	External thread M12

Functions

IP protection - complete device	IP65
---------------------------------	------

Environmental conditions

Use temperature [Min]	0 °C
Use temperature [Max]	40 °C

Approval

CE mark	✓
---------	---

Services (optional)

Article number for DAkkS calibration (tensile force)	963-163V
Article number for DAkkS calibration (compressive force)	963-263V
Article number for DAkkS calibration (tensile force/ compressive force)	963-363V

Packing & Shipping

Delivery time	1 d
Dimensions packaging (W×D×H)	120×90×85 mm
Shipping method	Parcel service
Net weight approx.	0,50 kg
Gross weight approx.	0,55 kg
Shipping weight	0,516 kg

Pictograms

STANDARD



OPTION

