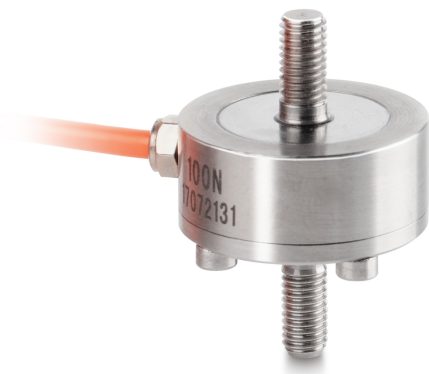


SAUTER CO 50-Y2

Miniature cylindrical load cell made from stainless steel

KERN



Construction

| | |
|------------------------------|--------------------------|
| Design | Tension-/compression rod |
| Dimension (Ø×H) | 26×37,5 mm |
| Material | stainless steel |
| Cable length | 2 m |
| Mounting - force dissipation | External thread M5 |
| Mounting - force application | External thread M5 |

Functions

| | |
|---------------------------------|------|
| IP protection - complete device | IP65 |
|---------------------------------|------|

Environmental conditions

| | |
|-----------------------|-------|
| Use temperature [Min] | 0 °C |
| Use temperature [Max] | 40 °C |

Approval

| | |
|---------|---|
| CE mark | ✓ |
|---------|---|

Services (optional)

| | |
|---|----------|
| Article number for DAkkS calibration (tensile force) | 963-161V |
| Article number for DAkkS calibration (compressive force) | 963-261V |
| Article number for DAkkS calibration (tensile force/ compressive force) | 963-361V |

Packing & Shipping

| | |
|------------------------------|----------------|
| Delivery time | 1 d |
| Dimensions packaging (W×D×H) | 120×90×85 mm |
| Shipping method | Parcel service |
| Net weight approx. | 0,10 kg |
| Gross weight approx. | 0,15 kg |
| Shipping weight | 0,2 kg |

Pictograms

STANDARD



OPTION



Category

| | |
|------------------|---------------------------|
| Brand | Sauter |
| Product category | Measuring cell |
| Product group | Load/force measuring cell |
| Product family | CO Y2 |

Measuring System

| | |
|--|------------------------|
| Weighing capacity [Max] | 50 kg |
| Measuring range force [Max] (N) | 500 N |
| Directions of force | tension compression |
| Load cell connection | 4-wire |
| Load cell OIML class | G5 |
| Load cell - characteristic value - nominal | 1,5 mV/V |
| Load cell - Combined error | 0,5% |
| Measuring applications | force mass |
| Load cell - Input resistance - nominal | 350 Ω |
| Load cell - Output resistance - nominal | 350 Ω |
| Load cell - Isolation resistance - [Min] | 5000 MΩ |
| Load cell - Recommended excitation voltage [Min] | 9 V |
| Load cell - Recommended excitation voltage [Max] | 12 V |
| Load cell - Input resistance - variance | 20 Ω |
| Load cell - Output resistance - variance | 3 Ω |