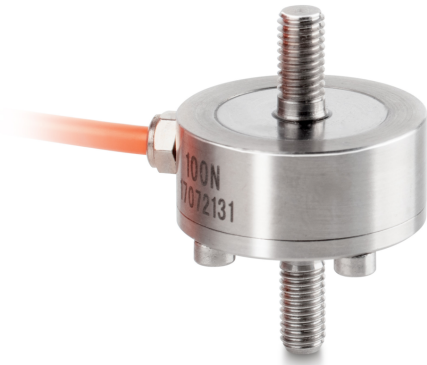


SAUTER CO 20-Y2

KERN

Miniature cylindrical load cell made from stainless steel



Construction

Material	steel, stainless
Design	Tension-/compression rod
Dimension (Ø×H)	26×37,5 mm
Cable length	2 m
Mounting - force application	External thread M5
Mounting - force dissipation	External thread M5

Environmental conditions

Use temperature [Min]	0 °C
Use temperature [Max]	40 °C

Approval

CE mark	✓
---------	---

Services (optional)

Article number for DAkKS calibration (compressive force)	963-261V
Article number for DAkKS calibration (tensile force)	963-161V
Article number for DAkKS calibration (tensile force/ compressive force)	963-361V

Product information

GTIN/EAN number	4045761232990
Trade number	90249000
REACH classification	no prohibited substances

Packing & Shipping

Shipping method	Parcel service
Delivery time	1 d
Dimensions packaging (W×D×H)	120×90×85 mm
Net weight approx.	0,10 kg
Gross weight approx.	0,15 kg
Shipping weight	0,2 kg

Category

Brand	Sauter
Product category	Measuring cell
Product group	Load/force measuring cell
Product family	CO Y2

Measuring System

Weighing capacity [Max]	20 kg
Measuring range force [Max] (N)	200 N
Power supply + Colour	red
Power supply - Colour	black
Load cell - Combined error	0,5%
Load cell - Isolation resistance - [Min]	5000 MΩ
Load cell - Recommended excitation voltage [Min]	9 V
Load cell - Input resistance - nominal	350 Ω
Load cell - Output resistance - nominal	350 Ω
Measuring applications	force mass
Load cell - characteristic value - nominal	1,5 mV/V
Safe overload	150%
Creep error (30 minutes)	+/- 0.1%FS
Temperature coefficient - zero signal	± 0.05% F.S. /10 °C

Functions

IP protection - complete device	IP65
---------------------------------	------

SAUTER CO 20-Y2



Miniature cylindrical load cell made from stainless steel

Pictograms

STANDARD



OPTION

