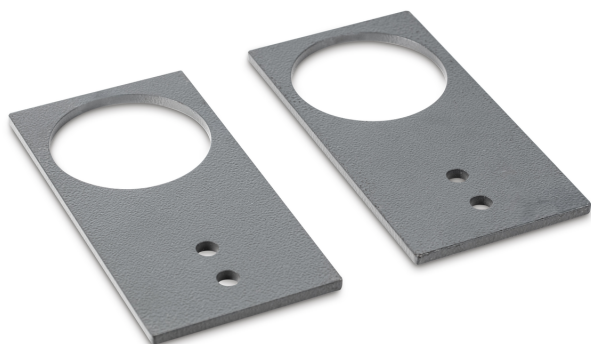


KERN BFS-A06N

KERN

Pair of base plates to fix the weighing bridge to the floor



Category

Brand	KERN
Product category	Balance
Product group	Base plate

Construction

Dimension (W×D×H)	160×80×6 mm
Material	steel, lacquered
Material weighing plate	steel, lacquered
Material platform	steel, varnished
Material load cell(s)	steel

Functions

PLU - total	100
-------------	-----

Packing & Shipping

Delivery time	1 d
Dimensions packaging (W×D×H)	205×105×20 mm
Net weight	0,74 kg
Shipping method	Parcel service
Net weight approx.	0,75 kg
Gross weight approx.	0,80 kg
Shipping weight	0,78 kg

Pictograms

STANDARD

