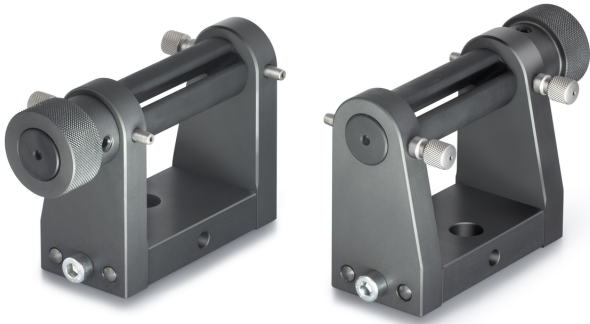


KERN AD 9255



Belt tension clamp



Category

Brand	Sauter
Product category	Clamp
Product group	Strip tension clamp

Construction

Dimensions completely mounted (W×D×H)	158×101×52 mm
Material	steel
Mounting - force dissipation	Threaded hole M6 External thread M12
Maximum clamp width	80 mm
Clamping width	5 mm
Tensile/compressive force [Max]	20 kN

Environmental conditions

Storage temperature [Min]	-10 °C
Storage temperature [Max]	40 °C

Packing & Shipping

Delivery time	14 d
Dimensions packaging (W×D×H)	158×101×52 mm
Shipping method	Parcel service
Net weight approx.	2,4 kg
Gross weight approx.	2,4 kg
Shipping weight	2,3 kg

Pictograms