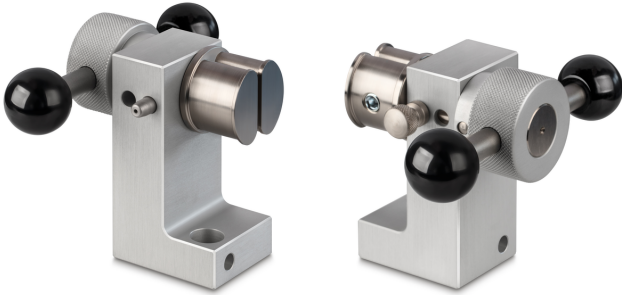


# SAUTER AD 9250

**KERN**

Belt tension clamp



## Category

Brand	Sauter
Product category	Clamp
Product group	Roller tension clamp

## Construction

Dimensions completely mounted (W×D×H)	105×91×80 mm
Material	steel
Mounting - force dissipation	Threaded hole M6 External thread M12
Maximum clamp width	25 mm
Clamping width	2,5 mm
Tensile/compressive force [Max]	10 kN

## Environmental conditions

Storage temperature [Min]	-10 °C
Storage temperature [Max]	40 °C

## Packing & Shipping

Delivery time	14 d
Dimensions packaging (W×D×H)	105×91×80 mm
Shipping method	Parcel service
Net weight approx.	1,6 kg
Gross weight approx.	1,6 kg
Shipping weight	1,5 kg

## Pictograms