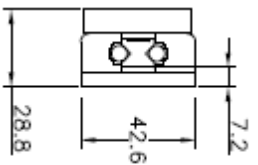


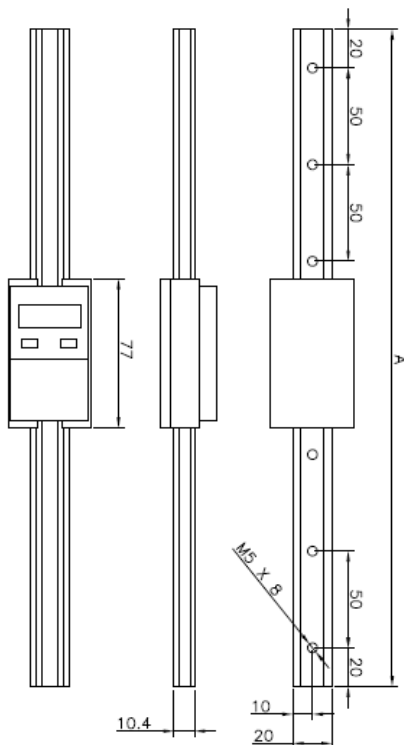
Instruction Manual LB

LB DIGITAL LENGTH METER

Dimensions:



Small window behind the battery = Data output for printer



Battery: UCAR Mod. CR2032 3Volt- already inserted

Functions

1. Right Button R: press to switch on
2. Right Button R: press and release rapidly for zeroing the Length Meter
3. Right Button R: press and hold to switch off
4. Left button L: press and release rapidly → change of units from mm to inch values and vice versa
5. Left button L: press and hold, then REF 1 is ready to HOLD. Measurement is locked by pressing and rapidly releasing the R button. To return to normal values, HOLD has to be taken off by pressing R and exit from REF 1 by pressing L.

6. Left button L: With REF the device is ready for the PRESET. By pressing and holding button L, PRESET appears. Then L has to be pressed and rapidly released to select the desired box, go to button R to set the value and L has to be pressed to exit from the selection.

7. Left button L: With REF 1, button L has to be pressed once to go to REF 2 or vice versa for setting any two values.

Maintenance:

a) The working faces have to be kept clean and dry. Prevent liquids from getting into the frame lest, because the electronics might be damaged. In case that liquids have got in, the frame has to be taken apart and dried up under 60°C.

b) The scale body has to be cleaned with a soft fabric or liquid sink soap. Do not use petroleum based lacquer thinner, industrial alcohol or petroleum spirits. Organic solutions are not allowed.

c) Never apply power pressure on any part of the scale lest it damages the housing.

Fixing Instructions

Check to see if there has been any damage to the scale unit. If so, please contact our company immediately.