

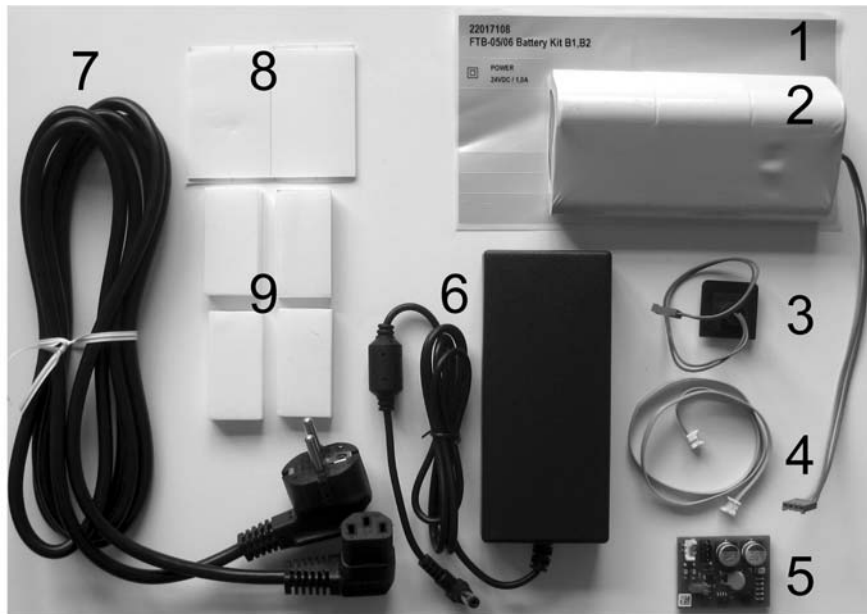


KERN FTB-A05/A06

Version 1.1 06/2007

Installation Instructions Rechargeable battery

1 Scope of delivery



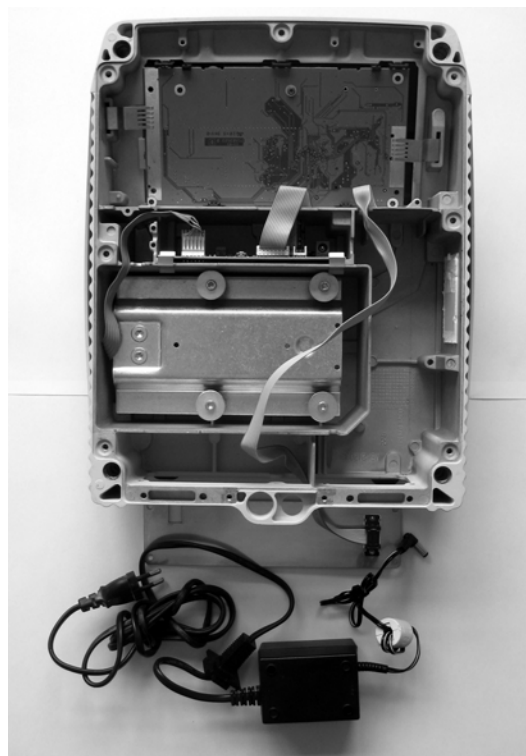
1. Sticker
2. Block of rechargeable battery with connecting cable board / rechargeable battery
3. Connecting cable board / net adapter bushing
4. Connecting cable terminal board to rechargeable board
5. Board
6. Net adapter 24V/1,88A
7. Power cable
8. 2 x adhesive strip for rechargeable block
9. 4 x cushion adhesive strip for rechargeable block (only for balances of big construction type)

2 Installation

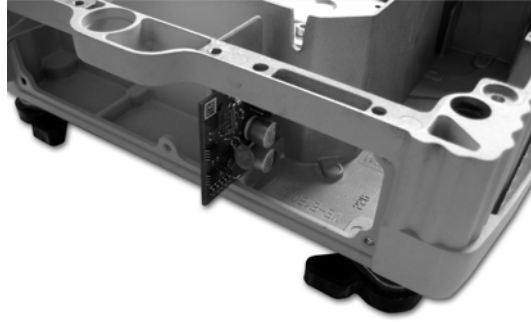
1. Unscrew the bottom plate



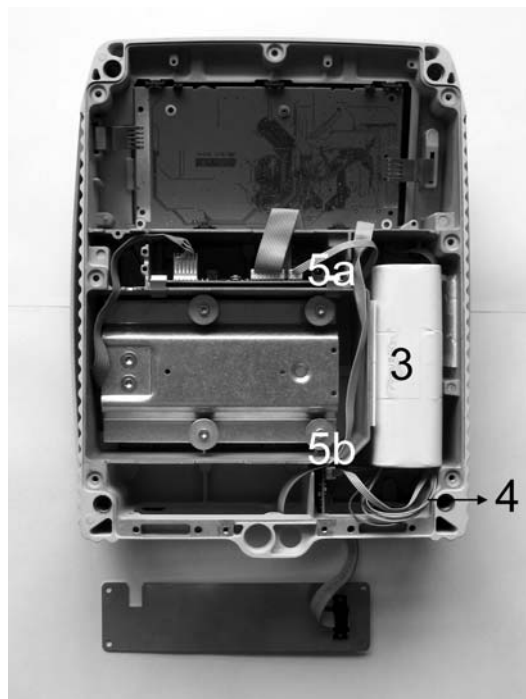
2. Dismantle the net adapter (2), covering plate (1) in the rear (if necessary remove the rubber hose from the rear wall, depending on the version)



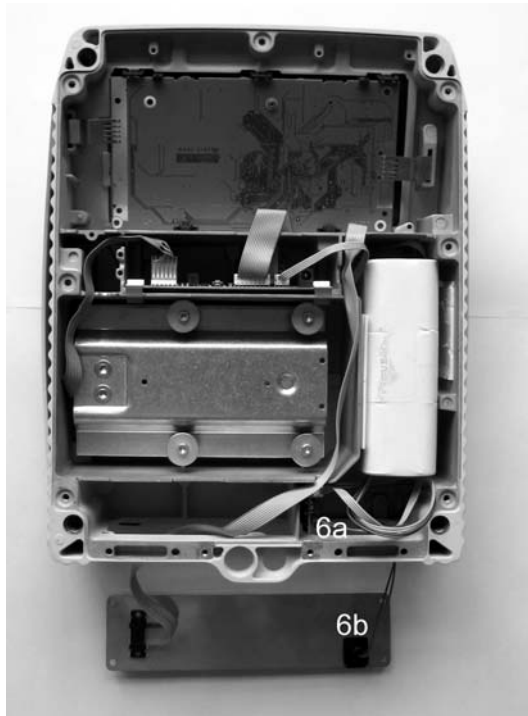
3. Insert board into the groove from the rear



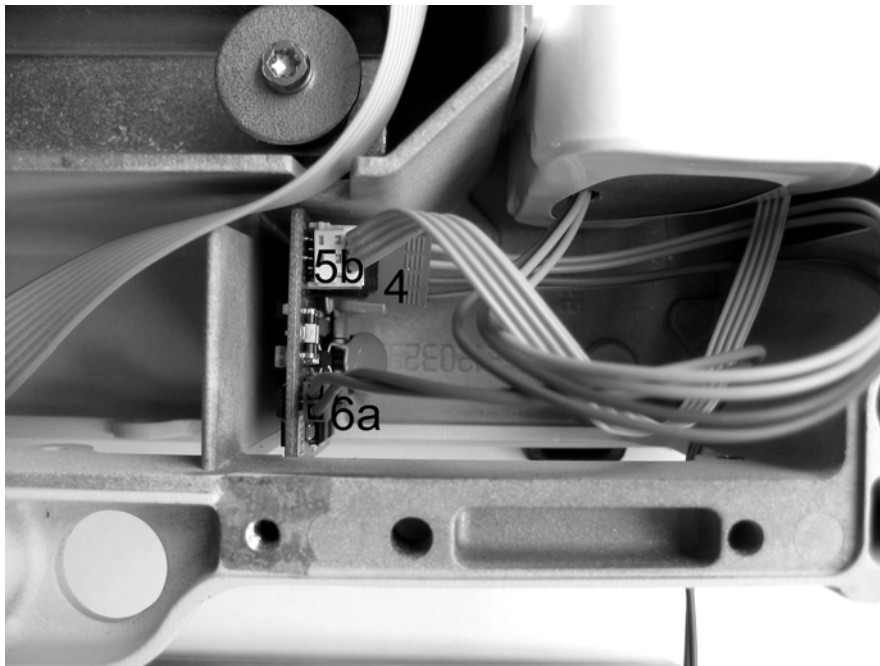
4. Install the rechargeable block (3) (fixture with 2 adhesive strips)



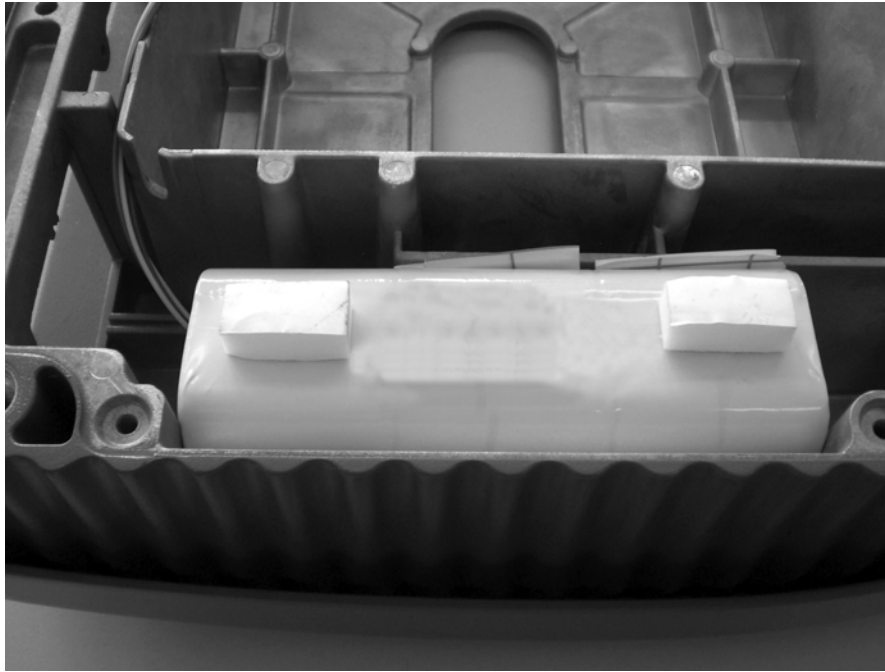
5. Make connection of small board with the rechargeable block (4, coloured cable)
6. Connect the small (5b) and the big board (5a) with the white cable



7. Install connecting cable of board (6a) / net adapter bushing (6b)



8. Detail photo „Connections to board“



9. Apply cushion adhesive strips (only for balances of large-size construction type), that the bottom plate of the balance is not pressed too much.